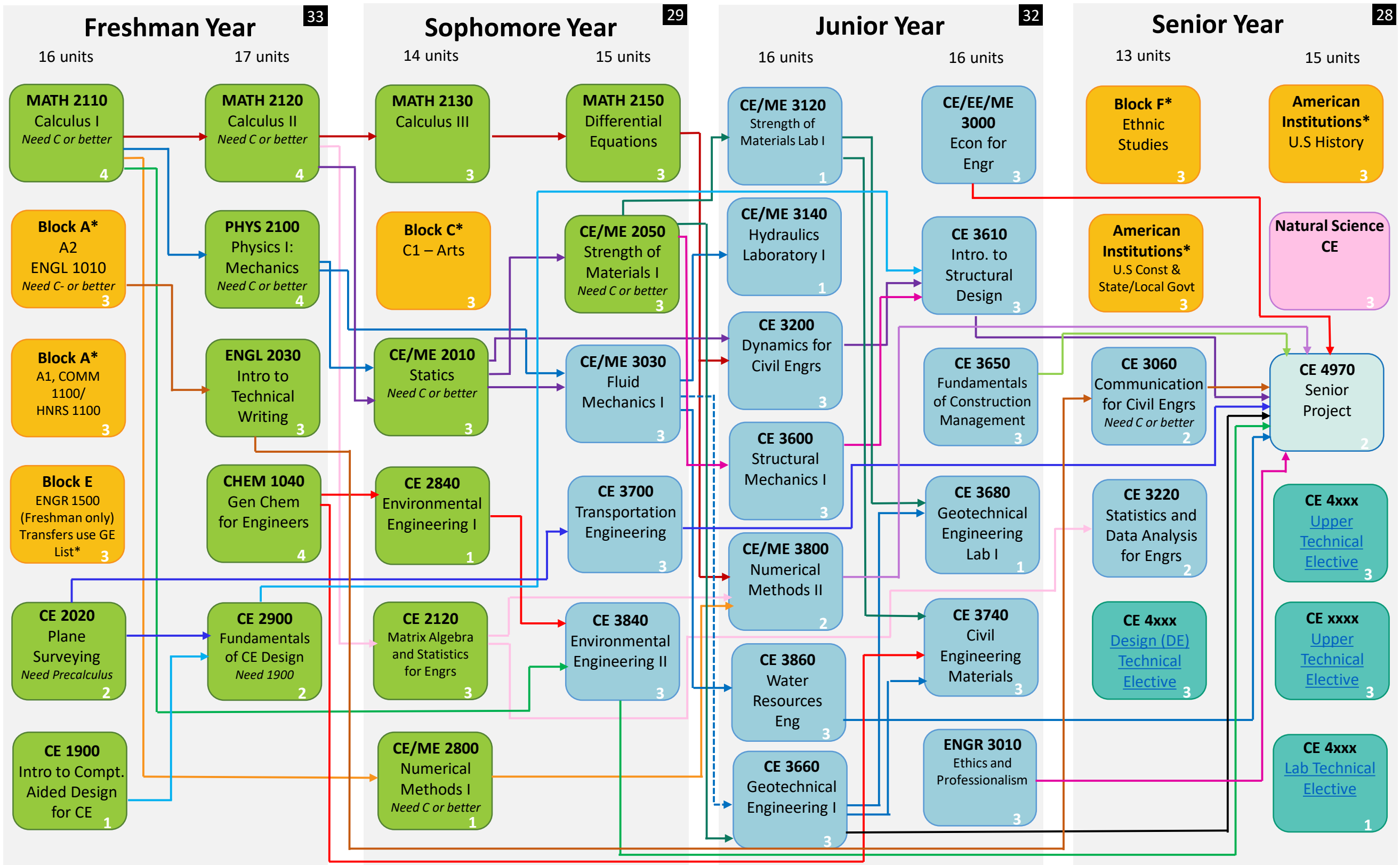




# California State University Los Angeles

Department of Civil Engineering

Bachelor of Science in Civil Engineering 122 Units Fall 2024



————> Prerequisite  
 - - - - -> Pre/Co-requisite

\* Choose one course from Lower Division GE List in University e-catalog – Must take either 2 (re) or 1 (re) + 1 (d) with LD GE's

Color Key:

- General Education
- Lower Division
- Natural Science
- Upper Division
- Senior Design
- Technical Elective

The rainbow lines do not have meaning; they are pretty lines to help you follow the path.