



CAL STATE LA

CALIFORNIA STATE UNIVERSITY, LOS ANGELES

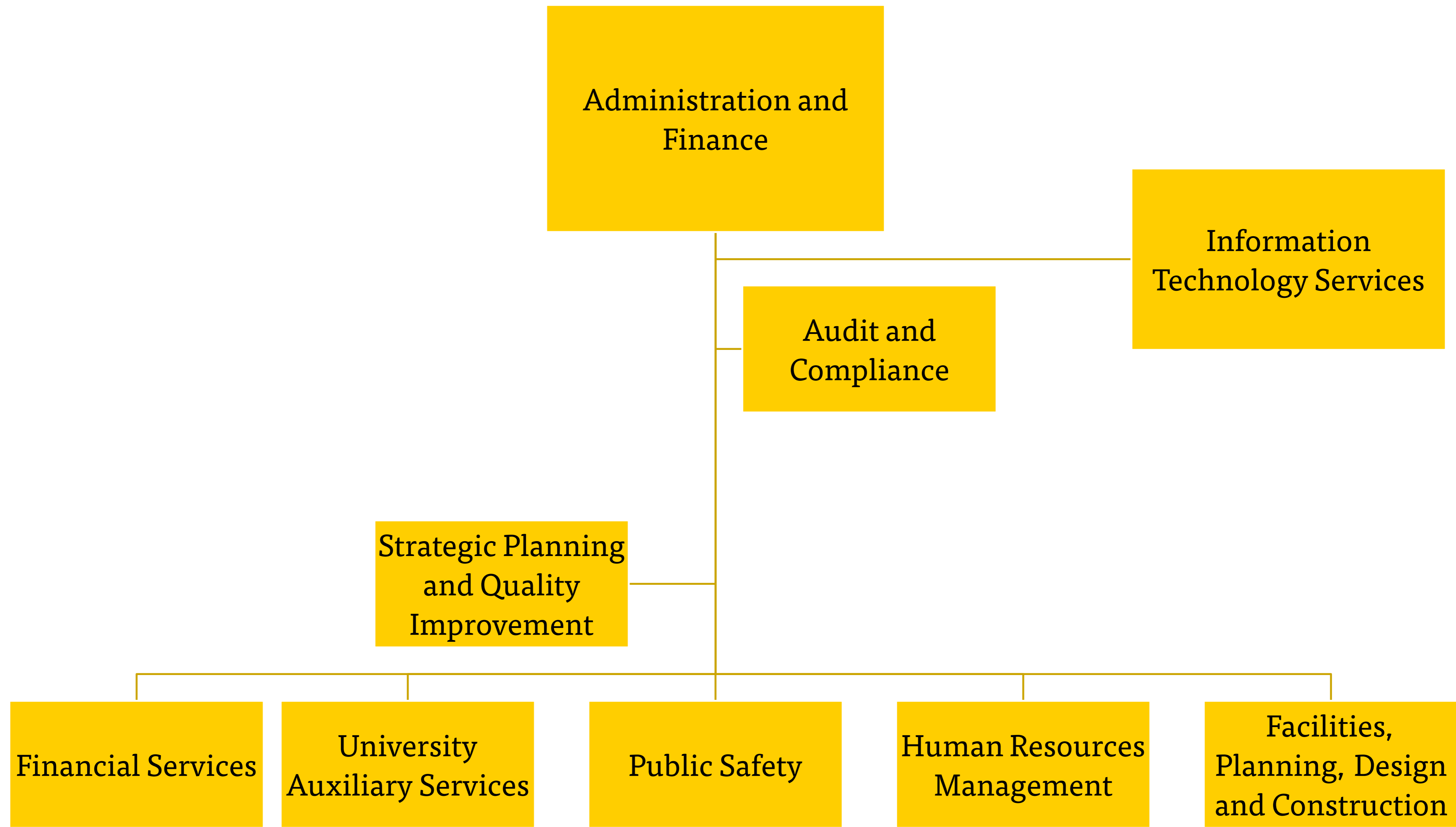
Administration and Finance Update
October 9, 2018

Cal State LA Campus Wide 2018/2019 Budget

General Fund Appropriation	\$166,135,539
Student Tuition Revenue	\$130,109,511
Non Resident Tuition Revenue	\$6,450,356
Other Fee Revenue	\$1,650,766
Total General Fund	\$304,346,172
Less Prior Year Base 16/17	<u>(\$282,471,972)</u>
Available for Distribution	\$21,874,200
Employee Compensation*	(\$7,715,000)
Mandatory Health/Dental Increase*	(\$563,000)
Retirement Adjustment*	(\$1,710,000)
State University Grants*	<u>(\$7,357,200)</u>
Dedicated Amount	(\$17,345,200)
Available for Distribution	\$4,529,000

Cal State LA Campus Wide 2018/2019 Budget

Available for Distribution	\$4,529,000	
<u>University Strategic Priorities</u>		
Benefits	(\$1,490,000)	
Tenure Track Hiring	(\$1,520,000)	
Baseline Computers & Tech Rooms	<u>(\$375,000)</u>	
	(\$3,385,000)	
To be Distributed to Divisions:	\$1,144,000	
President's Area	\$36,428	3%
Academic Affairs	\$813,592	71%
Information Technology Services	\$81,259	7%
Student Life	\$37,657	3%
Administration and Finance	\$146,900	13%
University Advancement	\$28,164	2%





Financial Services

- Associate Vice President for Financial Services
- 8th Consecutive year that Cal State LA met or exceeded the Small Business/Disabled Veteran-Owned Business (SBE/DVBE) targets
- Successfully completed a reverse auction to refresh our copier and print fleet programs. Saved campus \$260,000.
- Increased student direct deposit participation to 73%
- Budget Redesign completed
- Implementing ePBCS Budgeting Software

- Budget Administration**
- About
- Budget Oversight
- Contact Us
- Forms
- Reference, Guides & Links
- CSU Budget Central
- Budget Workshop



Resource Allocation Plan

Budget Model Redesign

Budget Cycle Calendar

Year-End Reports

Budget Oversight

Student Success Fee

Budget Administration supports the University's mission by providing strategic financial planning, budgetary development, and budget financial assessment to the University's academic, administrative, operational, and auxiliary units.

Our office provides advisory and strategic planning support to the Resource Advisory Allocation Committee (RAAC), vice presidents, deans, resource managers, and the campus community. We are responsible for all aspects of the University's budget planning, development, administration, and reporting in accordance with University Administrative Procedure 212.

Budget Administration also oversees the University's student aid accounting and financial reporting, cash management, campus pooled investment, and banking services management.

Budget Administration > **Resource Allocation Plan**

- About
- Budget Oversight**
- Contact Us
- Forms
- Reference, Guides & Links
- CSU Budget Central
- Budget Workshop

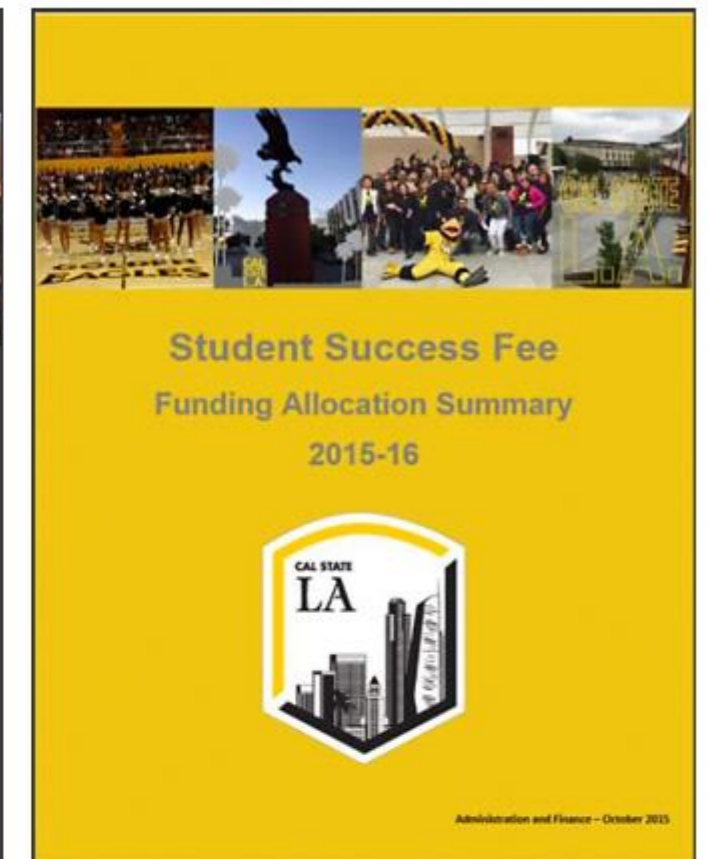
Resource allocation plan establishes the distribution of fiscal resources of the University. The University Resource Allocation, as defined by Administrative Procedure 212, establishes the policy and procedures for allocating the fiscal resources of the University. Campus budget allocations are based upon predefined Chancellor's Office allocations and the campus strategic initiatives. The President provides the preliminary budget guidelines that outline the campus priorities for the following year. The preliminary budget guidelines initiate the university's Resource Allocation Plan and these are provided to campus stakeholders for input, consultation, discussion and information.

- [Fiscal Year 2017-2018](#)
- [Fiscal Year 2016-2017](#)
- [Fiscal Year 2015-2016](#)
- [Fiscal Year 2014-2015](#)
- [Fiscal Year 2013-2014](#)
- [Fiscal Year 2012-2013](#)
- [Fiscal Year 2011-2012](#)
- [Fiscal Year 2010-2011](#)
- [Fiscal Year 2009-2010](#)
- [Fiscal Year 2008-2009](#)
- [Fiscal Year 2007-2008](#)

Budget Administration > **Year End Reports**

- About
- Budget Oversight
- Contact Us
- Forms
- Reference, Guides & Links
- CSU Budget Central
- Budget Workshop**

- [Fiscal Year 2016-17](#)
- [Fiscal Year 2015-16](#)
- [Fiscal Year 2014-15](#)
- [Fiscal Year 2013-14](#)
- [Fiscal Year 2012-13](#)
- [Fiscal Year 2011-12](#)
- [Fiscal Year 2010-11](#)
- [Fiscal Year 2009-10](#)



Student Success Fee Information by Fiscal Years

- > Funding Summary
- > Fiscal Year 2018-19
- > Fiscal Year 2017-18
- > Fiscal Year 2016-17
- > Fiscal Year 2015-16
- > Fiscal Year 2014-15
- > Fiscal Year 2013-14
- > Fiscal Year 2012-13
- > References



Budget Administration

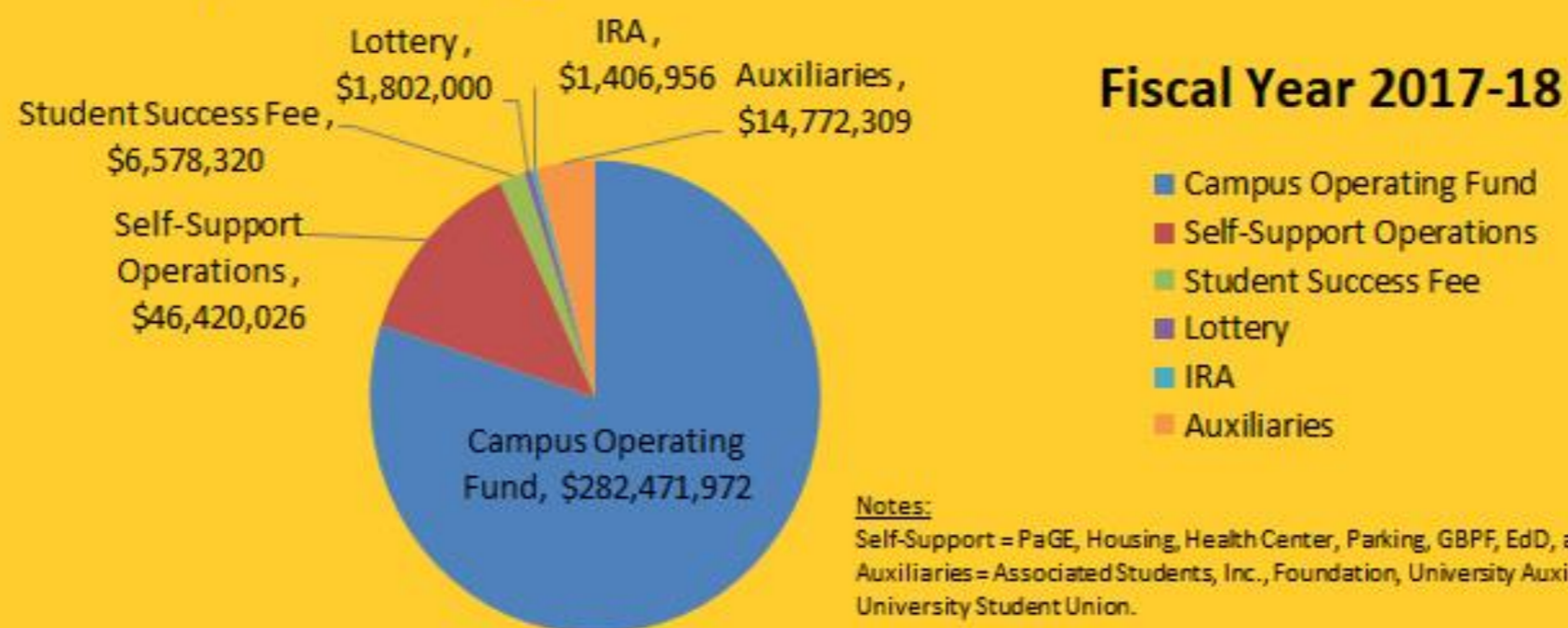
ADMINISTRATION FACILITIES FINANCE HUMAN RESOURCES PUBLIC SAFETY SERVICES UAS

Budget Administration >

- About
- Budget Oversight
- Contact Us
- Forms
- Reference, Guides & Links
- CSU Budget Central
- Budget Workshop

Resource Allocation Plan FY 2017-18

Campus Budgets At A Glance



GENERAL FUND

- [Introduction](#)
- [Overview](#)
- [President's Area](#)
- [Academic Affairs](#)
- [Information Technology Services](#)
- [Student Life](#)
- [Administration and Finance](#)
- [University Advancement](#)

SELF-SUPPORT

- [Self-Support](#)

STUDENT SUCCESS FEE

- [Advising and Retention](#)
- [Vital Technologies](#)
- [Student Development & Career Services](#)



Budget Administration

Budget Administration >

[About](#)

[Budget Oversight](#)

[Contact Us](#)

[Forms](#)

[Reference, Guides & Links](#)

[CSU Budget Central](#)

[Training and Workshops](#)

Training and Workshops

Budget Administration provides a variety of on-going training and workshops on the campus budgetary process. We provide in-person and online training by leveraging technology in our service delivery by incorporating online and cloud-based conference solutions like Zoom to reach a wider campus audience.

Some of the training and workshops that we provide include:

[Oracle-Hyperion Planning and Budgeting:](#)

Provides an introduction to the Oracle-Enterprise Planning and Budgeting System (ePBCS). Cal State LA's has implemented ePBCS to serve as the campus' budgeting and management reporting system. The system integrates enterprise wide planning and budgeting processes while providing cloud-based reporting and interface solutions.

[Planning and Budget Development Workshop](#)

Provides an overview of the University's annual budget planning and development process including the new budget forms in support of the All Funds Budget Model. In addition, the workshop includes discussion of different approaches to completing the new budget forms including tips on effective reporting, performance metrics, etc.

[University Carryforward Request](#)

Provides an overview of the campus carryforward request procedure. Division and department resource managers will have a better understanding of timeline, required forms, and overall process of submitting year-end budget carryforwards.

[Budget 101](#)

Provides an introduction to the University's budgetary process. This training session provides an understanding of the sources and uses of campus resources, the campus resource allocation process, campus chart of accounts, and various financial and budgetary tools available for reconciliation and analysis purposes.

Cal State LA's Budget and Management Reporting System



Oracle Planning
and Budgeting
Cloud Service

Integrates Enterprise-Wide Planning and Budgeting Processes

- Moves Away From Stand-Alone Spreadsheets

Modeling and Predictive Analytics

- All Funds Budget Scenario Planning

Reporting and Cloud Based Interface

- Report Development and Dashboards
- Integrates with MS Office, i.e. Word, Excel, PPT
- Anywhere/Anytime 24x7 Access



International Student Payment



Convenient payments for international students

Flywire protects international students from inflated exchange rates by securing wholesale/mid-market rates from our partners and disclosing costs up front. Our transparent process allows students to track their payments in real time online—so they know exactly when their payments are delivered to their institution.



Booking

Students book payments with Flywire in their home currency



Exchange

Flywire or its local licensed partner receives payment and processes foreign exchange



Payment

Flywire sends funds to institutions via batch disbursements with easy reconciliation



Facilities, Planning, Design and Construction

- Library A&B Levels-Completed
- Track and Field Renovation-Completed
- State Playhouse Seismic and Remodel-Completed
- Chiller #2-Completed
- Music Building Chilled Water Re-pipe- Completed
- Remodeled 66 Classrooms-Summer 2018
- Rongxiang Xu Bioscience innovation Center-Dec 2018
- Parking Structure E-Summer 2019
- Electrical Substation Replacement-Fall 2019
- Water Infrastructure/Utilities Repair- Spring 2020
- Chiller #3-June 2020
- Physical Sciences Upgrade-Spring 2021
- Student Housing East Project-Fall 2021
- FacilitiesLink

Cal State Los Angeles

- My Info**
Start Page for My Data
- Property**
Parcels, Easements
- Leasing**
Landlords, Tenants
- Regions**
Campus Areas & Zones
- Site Maps**
Aerial, Ground, GIS/CAD
- Buildings**
Home Pages, Reports
- Grounds**
Maps, Site Features
- Floor Plans**
Existing Condition CAD
- Plan Sets**
Construction Drawings
- Roof Plans**
Composite Roof Plans
- Space Inventory**
Rooms, Space, Reports

- Departments**
Org Chart, Home Pages
- Divisions**
VPs, Colleges, Auxiliaries
- Space Type**
Space Classifications
- Function**
Activity Classifications
- Instruction**
Class Schedule
- Research**
Sponsored Projects
- Indirect Cost**
Research Accounting
- Master Plans**
Map, Legend, Narrative
- Major Capital**
Reports, Home Pages
- Insurance**
OCIP / BRIP Programs
- Minor Projects**
Reports, Home Pages

- Relocations**
Expansions and Moves
- Work Orders**
Work Control, Reports
- Lock Shop**
Locks and Keys
- Key Control**
Requests and Checkouts
- ADA Survey**
Conditions, Deficiencies
- Equipment**
Asset Management
- Features**
Non-Equipment Assets
- Conditions**
Designations, Hazards
- Infrastructure**
Major / Site Utilities
- Energy**
Energy Reporting

- PHOTOS**
- Contacts**
Directory, Address Books
- Schedules**
Dates, Events, Calendars
- Timecard**
Hours, Labor, Reporting
- Documents**
Online Folders / Files
- Pictures**
Image Galleries, Uploads
- Comments**
Online Forums, Blogs
- GIS Explorer**
Features, Linework
- Database**
Queries, Data Mining

If you have additional questions about any of the information on the Cal State Los Angeles website, or need technical assistance with these pages, please contact the System Administrator by phone at (323) 343-3443 or by email at <FacilitiesLink@calstatela.edu>.

Public Safety, Parking and Transportation

- Implemented Body Worn cameras for all Police Officers
- Implemented new emergency alert System RAVE
- August we held an Active Shooter Drill on Campus with Cal State LA employees, LAPD, LA Sheriff, Alhambra Police, CHP, LA Fire
- Universal College Student Transit Pass (U-Pass) program for students allowing them to purchase a semester transit pass for unlimited rides on all Metro Rail and bus routes. 3,300 student passes sold Fall 2018.
- In October WaiveCar will be bringing 19 Hydrogen Cars for all campus use, first 2 hours free.



rideamigos



Environmental Health and Safety

- Nida Niravanh- Director of Risk Management and Environmental Health and Safety
- Greg Porter-Emergency Manager
- UC Risk and Safety Solutions (RSS) is being implemented
 - Assessment: This tool allows principal investigators to identify hazards related to their research and share this and other critical safety information about these hazards with the members of their lab.
 - Chemicals: A chemical inventory management tool that uses a barcoding system to quickly add chemicals to an inventory. It includes a library of chemicals that are referenced to populate chemical details, like hazards and first aid information. Chemicals is available in a phone app as well as for tablet or desktop.
 - Inspect: A flexible, customized tool that manages the scheduling, completion and long-term tracking of safety inspections. It is available for phones, tablets, and desktops.
- Great American Shakeup -10/18/2018 @10:18am

University Auxiliary Services

- In the midst of Finalists interviews for the Executive Director of University Auxiliary Services
- Have posted a Director of Sponsored Programs
- UAS employs 90 Fulltime employees and 460 student, hourly or casual workers
- Replaced seating in the food court, ballrooms and club
- Grant Activities for 17/18:
 - \$48,214,793 submitted proposals
 - \$23,863,229 in awarded grants



Information Technology Services

- Draft IT Strategic Plan
- Rolled out Information Technology Infrastructure Library (ITIL) and customer service training.
- Enhanced Wi-Fi infrastructure by installing 37 additional access points indoor and outdoor space
- Replaced Identity Management System with new Microsoft Identity Management system
- Collaborated with Academic Affairs and Student Life to deploy the following applications:
 - Degree Planner and EAB Advisement Tools
 - Campus Clarity
 - Canvas
- GETmobile -As of August 16, 2018: 5,857,073 activities performed through GETmobile since go live (11/1/2015), and there have been 46,482 total downloads: 35,707, for iOS and 10,775 for Android.

New functionality for fall 2018:

- Final Exam function – students will be able to see their final exam schedule on the mobile application
- Tuition Fee Calculator – students will be able to calculate the proposed tuition to attend Cal State LA depending on their situation
- College Scheduler – GETmobile will integrate with the College Scheduler application making it easier for students to register their classes that have been mapped out

Human Resources Management

- Preparation and data cleanup for the Common Human Resources Solution (CHRS) and PageUp™ Recruitment Module
- Tobacco Cessation sessions were offered to the campus in conjunction with becoming a smoke and tobacco free campus.
- Employee Assistance Program (EAP) –LifeMatters® 3 free sessions:
 - Counseling-Stress, family difficulties, depression, chemical dependency, crisis situations
 - Work/life resources-Child care providers and needs, elder care, health and wellness resources
 - Financial Consultation-Budgeting, credit report review and correction, information on mortgages, loans, debt management, college or retirement planning
 - Legal Consultation-Consumer law, traffic citations, family law, estate planning, other
 - 1-(800) 367-7474

Sustainability@CalState LA

- Campus Sustainability Committee was created
 - Climate Action and Adaptation Planning
 - Sustainability Policies and Reporting
 - Green Revolving Fund Administration
 - Zero Waste Program
- Draft Climate Action Plan for Cal State LA
 - Eliminate scope 1 & 2 GHG emissions by 2040
 - Achieve full carbon neutrality (Including Scope 3 emissions) by 2045



CSU Sustainability Policy

2014 Categories

- University Sustainability
- Climate Action Plan
- Energy Independence and Procurement
- Energy Conservation and Utility Management
- Water Conservation
- Waste Management
- Sustainable Procurement
- Sustainable Food Service
- Sustainable Building Practices
- Physical Plant Management



2020 Working Groups

- Buildings, Operations and Utilities
- Climate and Resilience
- Education and Engagement
- Culture and Community
- Leadership, Planning and Governance
- Materials and Food
- Transportation and Mobility

<http://www.calstate.edu/cpdc/sustainability/policies-reports/documents/JointMeeting-CPBG-ED.pdf>



STARS Reporting

- All campuses shall achieve a STARS Silver rating by 2022, and a Gold rating by 2025

Campus Staffing

- All campuses shall designate (1) Energy Manager, (1) Sustainability Manager, (1) TDM Coordinator, and (1) Zero Waste Coordinator

Climate & Resilience

- CSU shall achieve Carbon Neutrality no later than 2045 for all GHG emissions
- Climate Action Plans shall be fully incorporated into Campus Master Plan and/or Strategic Plan
- CSU will further integrate sustainability and climate literacy into the academic curriculum



California State University, Los Angeles

Is hereby recognized by the Association for the Advancement of Sustainability in Higher Education as a STARS Silver Institution based on its reported accomplishments in campus sustainability.

Awarded on June 6, 2016 and valid for three years.



A handwritten signature in black ink that reads "Meghan Fay Zahniser".

Meghan Fay Zahniser, Executive Director





Second Nature



Second Nature's Climate Commitment integrates a goal of **carbon neutrality** and **climate resilience** with a systems approach to mitigating and adapting to climate change

**CALIFORNIA STATE UNIVERSITY, LOS ANGELES
GREEN REVOLVING FUND (GRF) PROJECT APPLICATION**



Approved
 Denied

Project Name	LED Retrofit - Parking Structure A
Contact Name	Brad Havel
Contact Phone	323.343.5782
Contact Email	bhavel@calstatela.edu
Submittal Date	10/31/2017

Project ID	(Office Use Only)
Project Type	Energy
Department/Sponsor	Facilities
Start Date	February 1, 2018
Completion Date	August 1, 2018

PROJECT OVERVIEW: Describe project objective. What operations and/or behaviors does this project address?

Cree VG Series parking garage luminaires are designed to deliver optimal, low glare illumination by intelligently combining an in-house designed optical system consisting of indirect view LEDs, a highly efficient internal reflector and a precisely designed optical lens. Architectural design, quick and easy installation and low total cost of ownership makes the VG Series ideal for both new and existing parking garages.

IMPLEMENTATION PLAN: Describe project specific details. How will the project objective be achieved?

Facilities will install LED fixtures as 1-1 replacement

Measure #	Measure Description (Building/Floor)	# of Units	Installed Cost/Item	Subtotal Cost
1	CREE VG-A-PD-5W-A-57K-UL-WH-PML	187	\$ 302.37	\$ 56,543.19
2	CREE VG-A-PD-5W-A-57K-UL-WH-PML	185	\$ 302.37	\$ 55,938.45
3	CREE VG-A-PD-5W-A-57K-UL-WH-PML	177	\$ 302.37	\$ 53,519.49

Measure #	Existing Usage/Year	Proposed Usage/Year	Utility (Unit)	Utility Savings/Year
1	666,082.72	183,416.72	Electricity (kWh saved)	482,676.00

Additional Costs	(prevailing wage)	(i.e., engineering study)	(project lifetime)	(i.e., contingency)	Additional Costs
\$	-	\$	-	\$	-

MEASUREABLE OUTCOMES: Describe the anticipated environmental impact reductions. How will you ensure that proposed outcomes will be measured and verified?

Total of 549 luminaires (70,272 kW) replaced by Cree VG Series (27.45 kW) will result in a projected energy savings of 42,822 kW (60.94%).

SPECIAL CONSIDERATIONS: Describe key assumptions, potential risks and incertainties. Are there on-going expenses, maintenance requirements, safety issues, etc.?

Limited 10 year warranty. See <http://lighting.cree.com/warranty> for warranty terms. Rebate amount assumes \$90,028.97 for lighting and \$8,636.63 for controls.

PROJECT SUMMARY

482,676.00	Electricity (kWh saved)	Project Cost	\$ 166,001.13
-	Natural Gas (therms saved)	Incentive Amount	\$ 110,629.34
-	Diesel (gallons saved)	Supplemental Funding	
-	Gasoline (gallons saved)	Net Project Cost	\$ 55,371.79
-	Propane (gallons saved)	Utility Savings (\$)	\$ 67,184.20
-	Water (gallons saved)	Simple Payback	<1
-	Sewer (gallons reduced)	GHG Reduction	24849
-	Waste (tons reduced)	GHG Reduction/ft	4.488
		Years	
		MTCO _{2e} /yr	
		MTCO _{2e} /51K	



GRITS
Green Revolving Investment
Tracking System

Cal State LA Zero Waste Milestones

2015	2016	2020	2026	2036
Achieved 60+% waste reduction	Prepared Zero Waste Plan	80% waste reduction goal	90 % waste reduction goal	Moving toward Zero Waste goal
Initiated Zero Waste planning process	Initiated process for new Collection Services			

Zero Waste aims to minimize the amount of materials sent to our landfills by capturing valuable resources that can be recycled or composted.

Recent Sustainability Achievements



CAL STATE LA
CALIFORNIA STATE UNIVERSITY, LOS ANGELES

Cal State Los Angeles
Strategic Energy Plan (SEP)

December 2017

Submitted to:
California State University,
Los Angeles
5151 State University Drive,
Los Angeles, CA 90032

Prepared by:
Digital Energy, Inc.
555 Marin St, Suite 230
Thousand Oaks, CA 91360
Ph: (805) 374-1777

The cover of the Strategic Energy Plan (SEP) report features a large eagle sculpture in front of a building. The eagle is perched on a pedestal and has its wings spread. The building is a modern, multi-story structure with a brick and concrete facade.

LA DWP Los Angeles Department of Water & Power

DEMAND RESPONSE PROGRAM

SAVE MONEY & SUPPORT ENERGY RELIABILITY
IN LOS ANGELES

The logo for the Demand Response Program features a stylized city skyline with a sun rising behind it. The sun is yellow and the skyline is blue. The text "DEMAND RESPONSE PROGRAM" is in large blue letters, and "SAVE MONEY & SUPPORT ENERGY RELIABILITY IN LOS ANGELES" is in smaller orange and blue letters below it.

Current Sustainability Initiatives



AB 1826: Mandatory Commercial Organics Recycling

January 2019: Businesses that generate 4 cubic yards or more of commercial solid waste per week shall arrange for organic waste recycling services.



California Climate Strategy

Assembly Bill 32 (2006)

- 2000 GHG levels by 2010
- 1990 GHG levels by 2020
- 80% below 1990 GHG levels by 2050

Senate Bill 32 (2016)

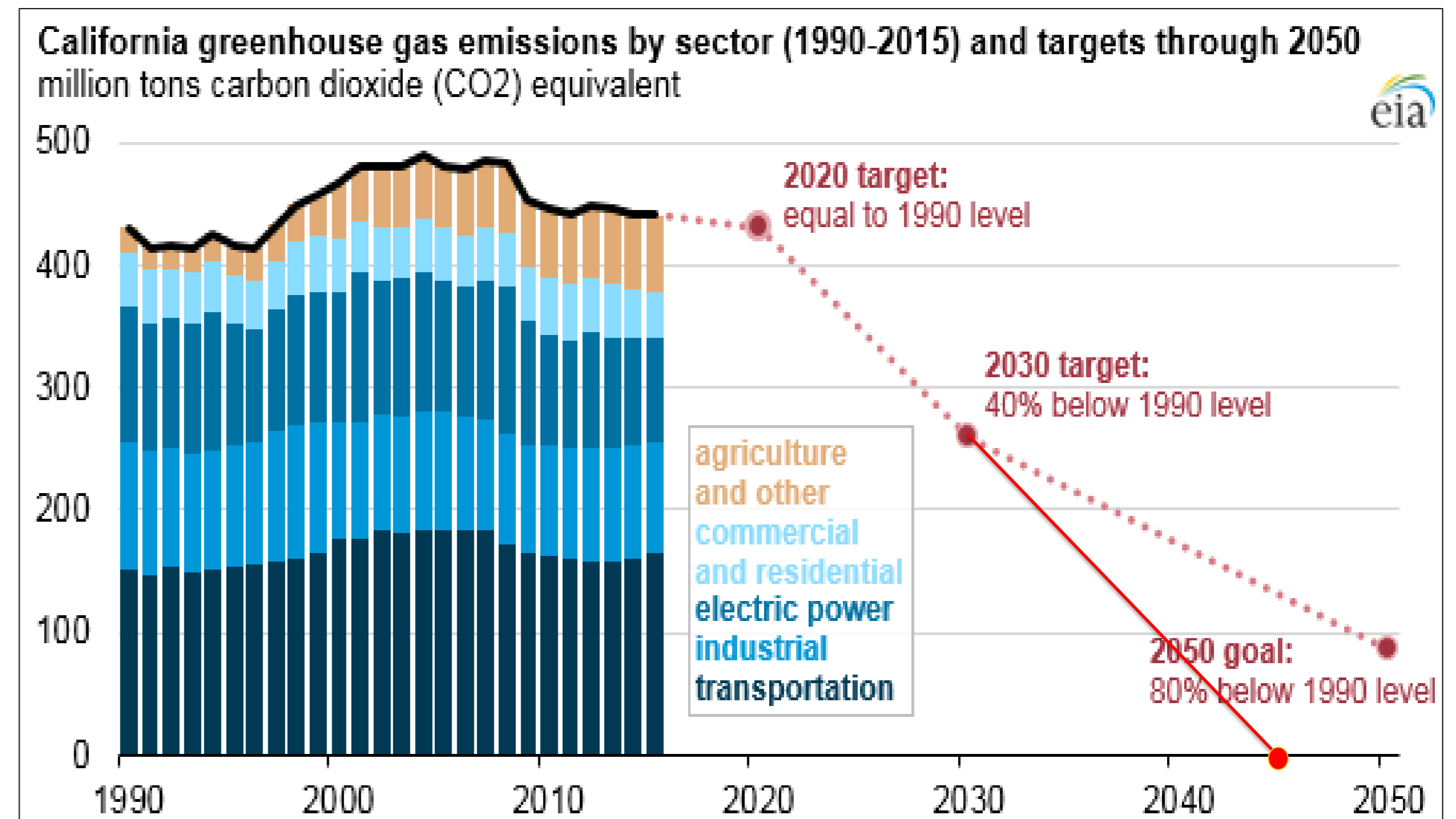
- 40% below 1990 GHG levels by 2030

Senate Bill 100 (2018)

- 100% zero-carbon electricity by 2045

Executive Order B-55-18 (2018)

- Carbon neutrality by 2045

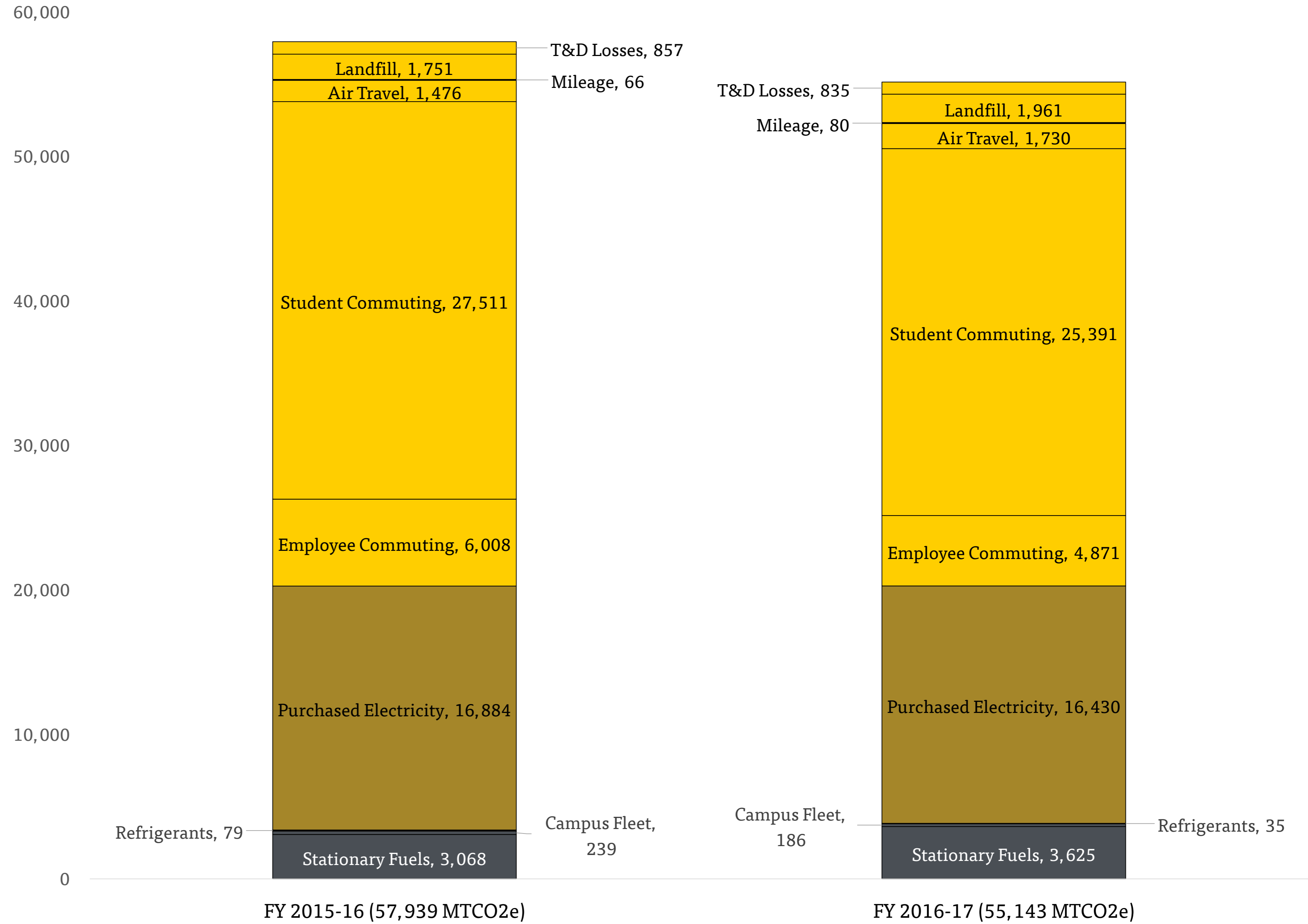


Cal State LA GHG Inventories

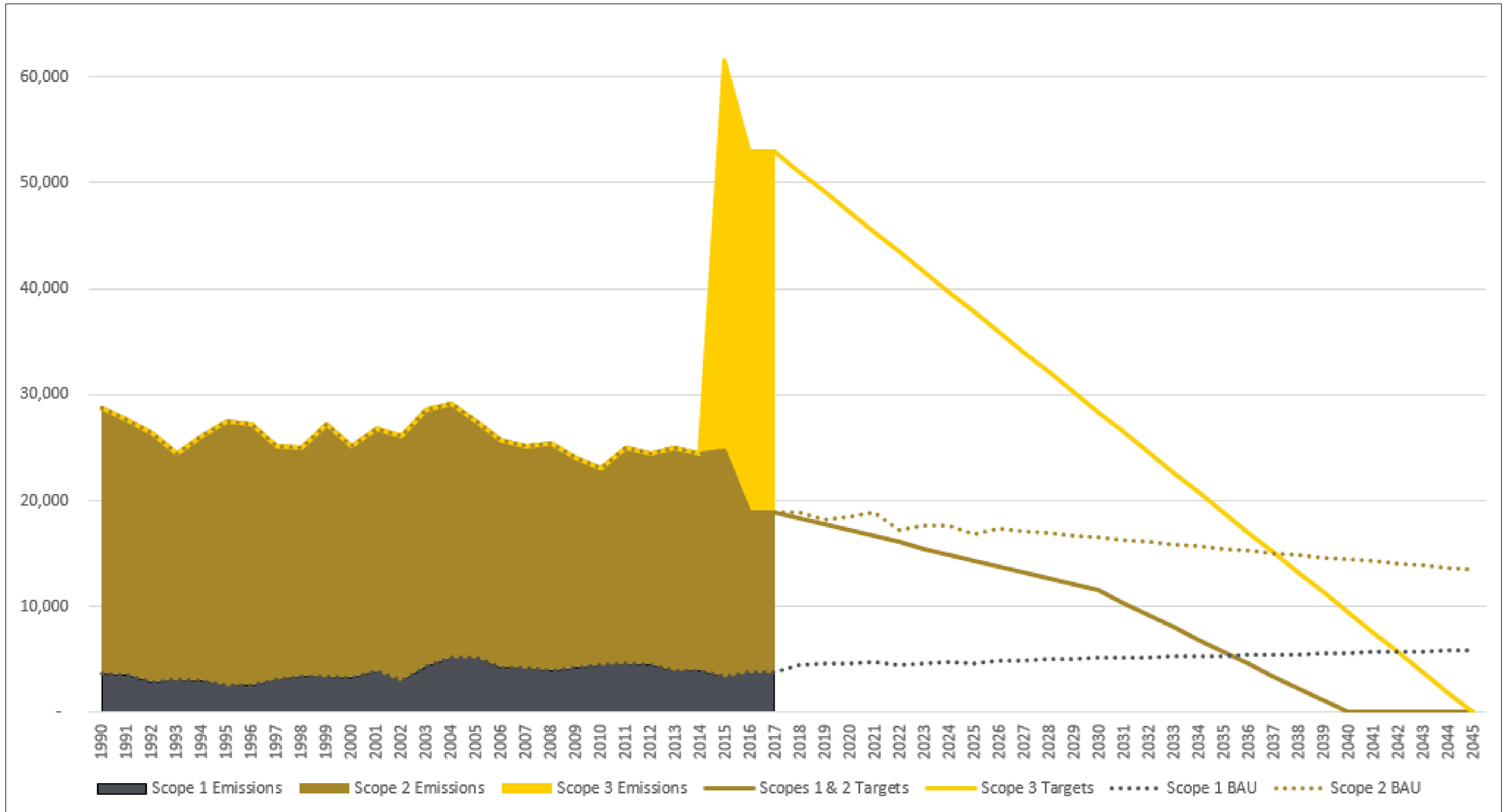
Scope 3:
Commuting
 (Faculty, Staff, Students)
Business Travel
 (Personal Mileage, Air Travel)
Solid Waste Disposal

Scope 2:
Purchased Electricity
 (LADWP)
Renewable Energy Credits
 (RECs)

Scope 1:
Stationary Fuels
 (Oil, Natural Gas, Propane)
Campus Fleet
 (Gasoline, Diesel, Hydrogen)
Refrigerants



Cal State LA Carbon Neutrality Targets





A Few Questions

PARKING

Senator Porter raised the following concern: I would like to express a concern regarding lack of faculty only parking. Just in the past week I have witnessed or heard from 3 faculty colleagues who came late to meetings because they could not find parking. This is disruptive for our university business and I am hoping that the University is considering a parking space for faculty only.

IT

Senator Bettcher raised the following concern: My concern is that faculty who retire and then FERP are having their email addresses and faculty webpages revoked. Obviously, this is bad for everybody as students need to be able to contact their instructors. Also, it is insulting to faculty who have devoted themselves to this institution. The message it sends is, “Don’t let the door hit you on the way out.”

SPACE

Senator Harris raised the following the following concern: 1) A colleague asked if the university could number all rooms in the same manner. King Hall and E&T list wings before room numbers, but Salazar Hall lists wings after room numbers.



CAL STATE LA
CALIFORNIA STATE UNIVERSITY, LOS ANGELES

Questions?