



Cal State L.A. Facts

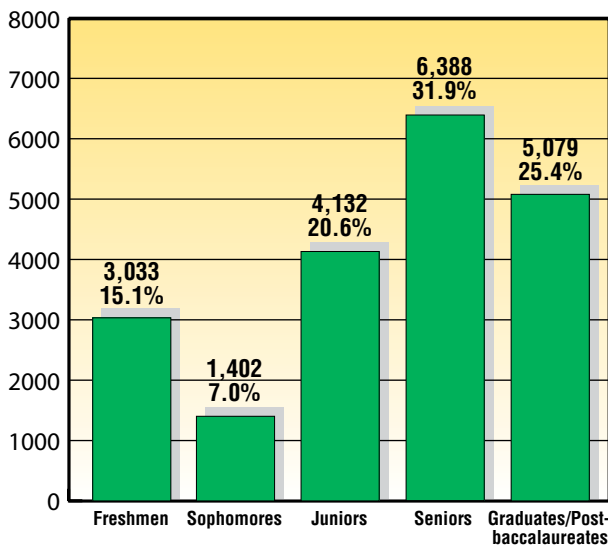
May 2006
39

PREPARED BY THE OFFICES OF INSTITUTIONAL EFFECTIVENESS AND PUBLIC AFFAIRS • FOR INFORMATION, CALL (323) 343-2730 • www.calstatela.edu/InstitutionalEffectiveness

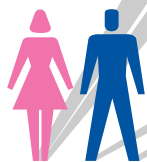
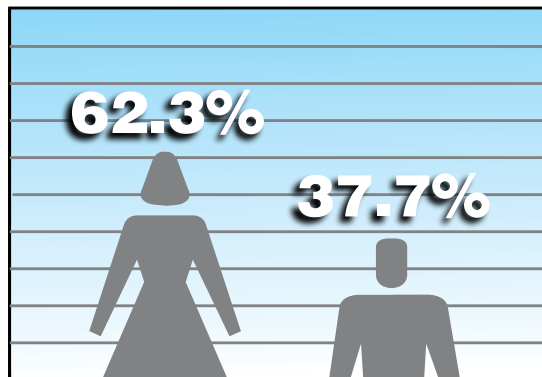
The Offices of Institutional Effectiveness and Public Affairs have developed Cal State L.A. Facts to provide the campus community with pertinent information about the University. Data are presented for Fall Quarter 2005 (unless noted otherwise), since the fall term is generally considered representative of the academic year.

- Cal State L.A. enrolled 20,034 students in Fall 2005. The full-time equivalent student (FTES) figure was 15,294.

Headcount by Class Level



Headcount by Gender



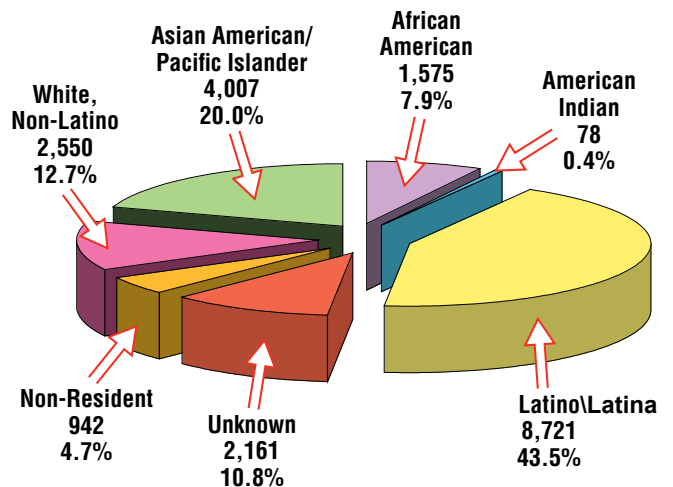
Females.....12,487
Males.....7,547

Headcount by Study Load

UNDERGRADUATES		GRADUATES/ POSTBACCALAUREATES	
Full time: (12.0 or more units)	10,872	(9.0 or more units)	2,153
Part time: (6.1 to 11.9 units)	2,496	(6.1 to 8.9 units).....	1,264
Limited: (0.1 to 6.0 units).....	1,587	(0.1 to 6.0 units).....	1,662
Total:	14,955	Total:	5,079

- The average study load is 12.3 units for undergraduates, 9.1 for graduates/postbaccalaureates, and 11.5 overall.

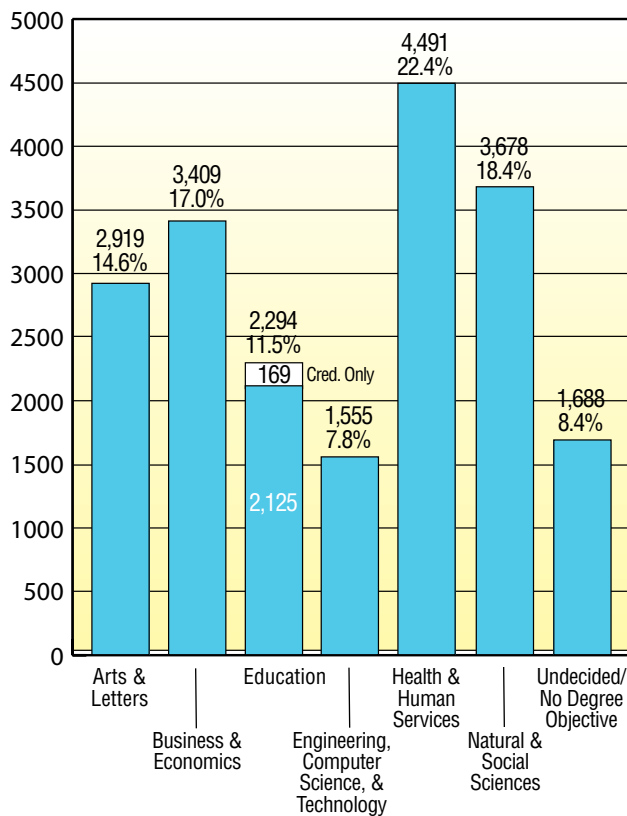
Headcount by Race/Ethnic Group



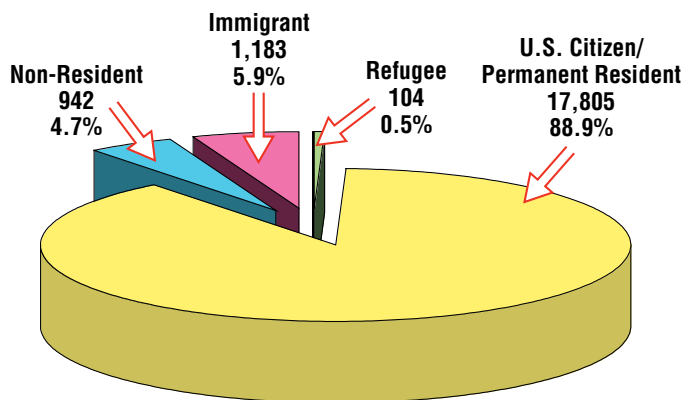
Racial/ethnic data are voluntarily reported. Labelling is consistent with the Chancellor's Office publications.

The average age of undergraduates is 25, while that of graduates and postbaccalaureates is 33. The average for the combined groups is 27.

Headcount by College Major



Headcount by Citizenship Status

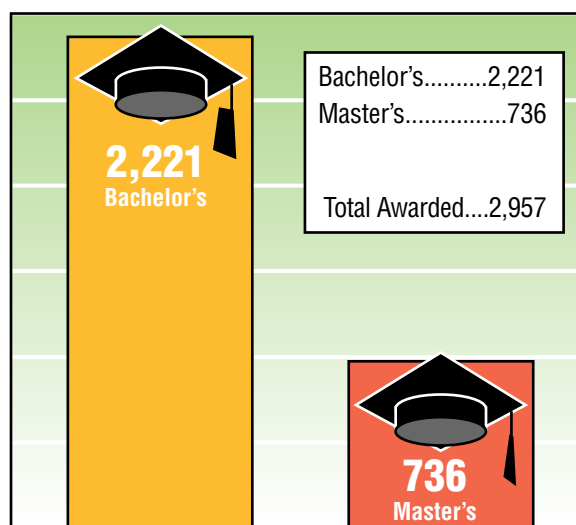


Headcount by Enrollment Status

Continuing/Returning.....	14,932	74.5%
New Undergrad Transfer.....	2,027	10.1%
First-time Freshman.....	1,458	7.3%
Transitory*.....	425	2.1%
New Grad/Postbacc.....	1,192	5.9%

* Includes high school students taking college coursework as well as college students matriculated elsewhere.

2004-2005 Degrees Awarded



Largest Enrolled Undergraduate Programs

BA Child Development.....	951
BA Psychology.....	856
BS Business Administration-Accounting.....	848
BS Criminal Justice.....	811
BA Liberal Studies.....	752

Top Undergraduate Degrees

BA Child Development.....	230
BA Social Work.....	140
BA Psychology.....	137
BA Liberal Studies.....	135
BS Business Administration-Accounting.....	126

Largest Enrolled Graduate Programs

MS Counseling.....	302
MA Special Education.....	288
MSW Social Work.....	260
MS Nursing.....	152
MA or MS Psychology.....	126

Top Graduate Degrees

MS Counseling.....	59
MA Reading.....	53
MA Educational Administration.....	50
MSW Social Work.....	48
MA Curriculum and Instruction.....	36

Note: Percentages not totalling 100% are due to rounding.