



CAL STATE LA

CALIFORNIA STATE UNIVERSITY, LOS ANGELES

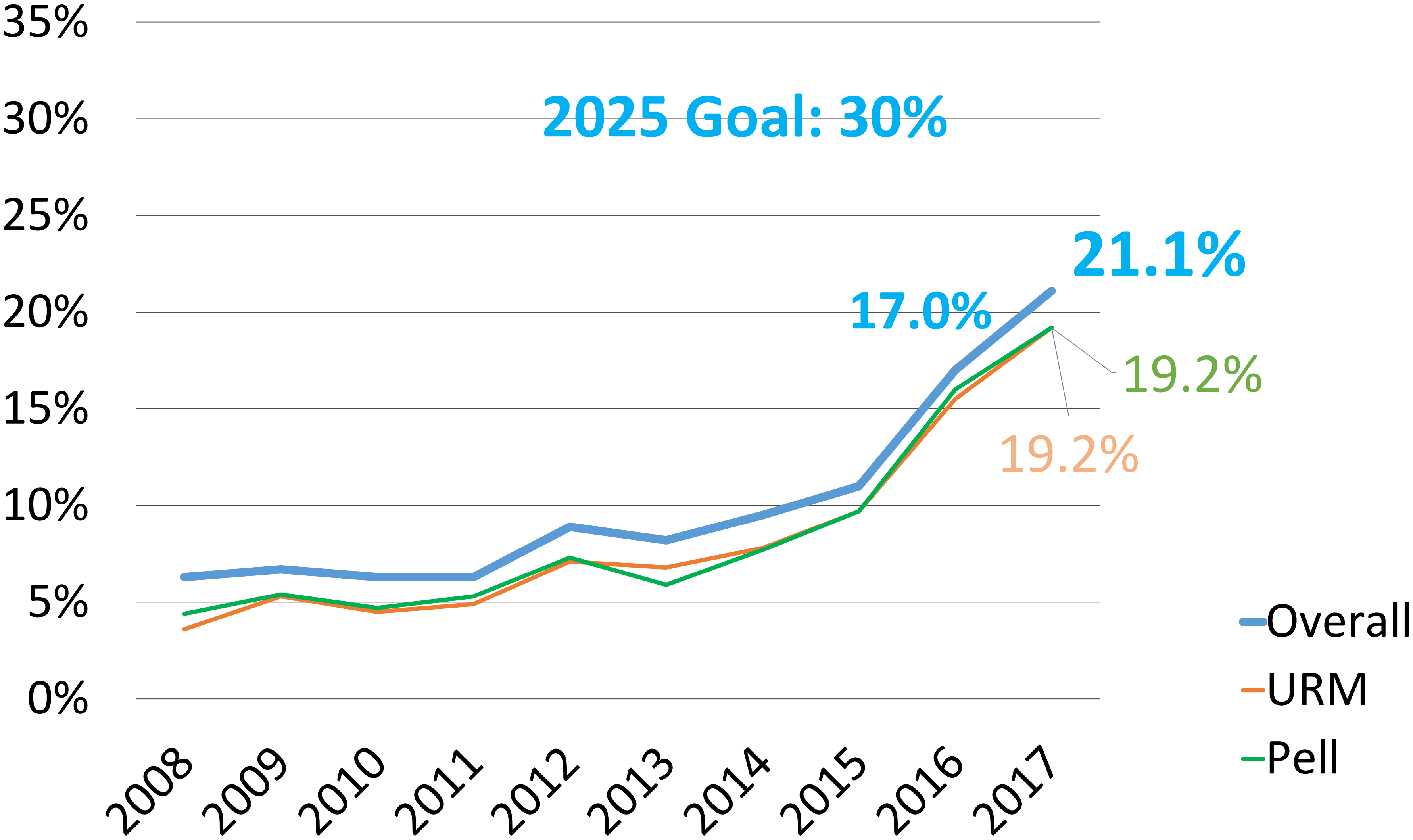
Cal State LA's Graduation Initiative 2025 Rates

	2025 Goal	2021
Freshmen (FTF) 4 year graduation rate	30%	21.1%
Freshmen (FTF) 6 year graduation rate	55%	52.1%
Transfer 2 year graduation rate	36%	49%
Transfer 4 year graduation rate	81%	79.8%

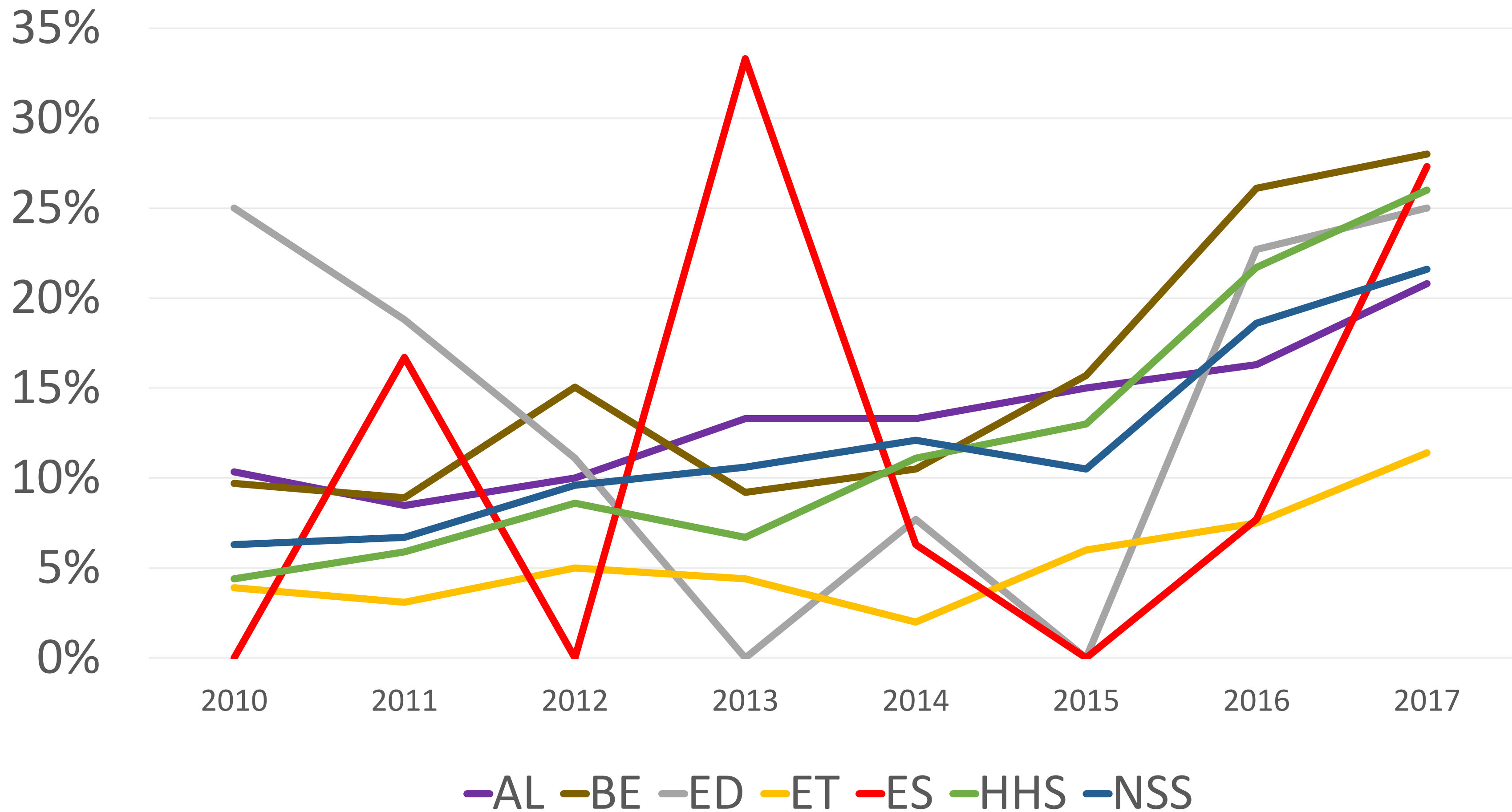
Cal State LA's Graduation Initiative 2025 Rates

	2025 Goal	Current
Gap – Historically Underrepresented students and non-underrepresented students in 6 year grad rates	0%	9.3%
Gap – Pell recipients and non-recipients in 6 year grad rates	0%	3.1%

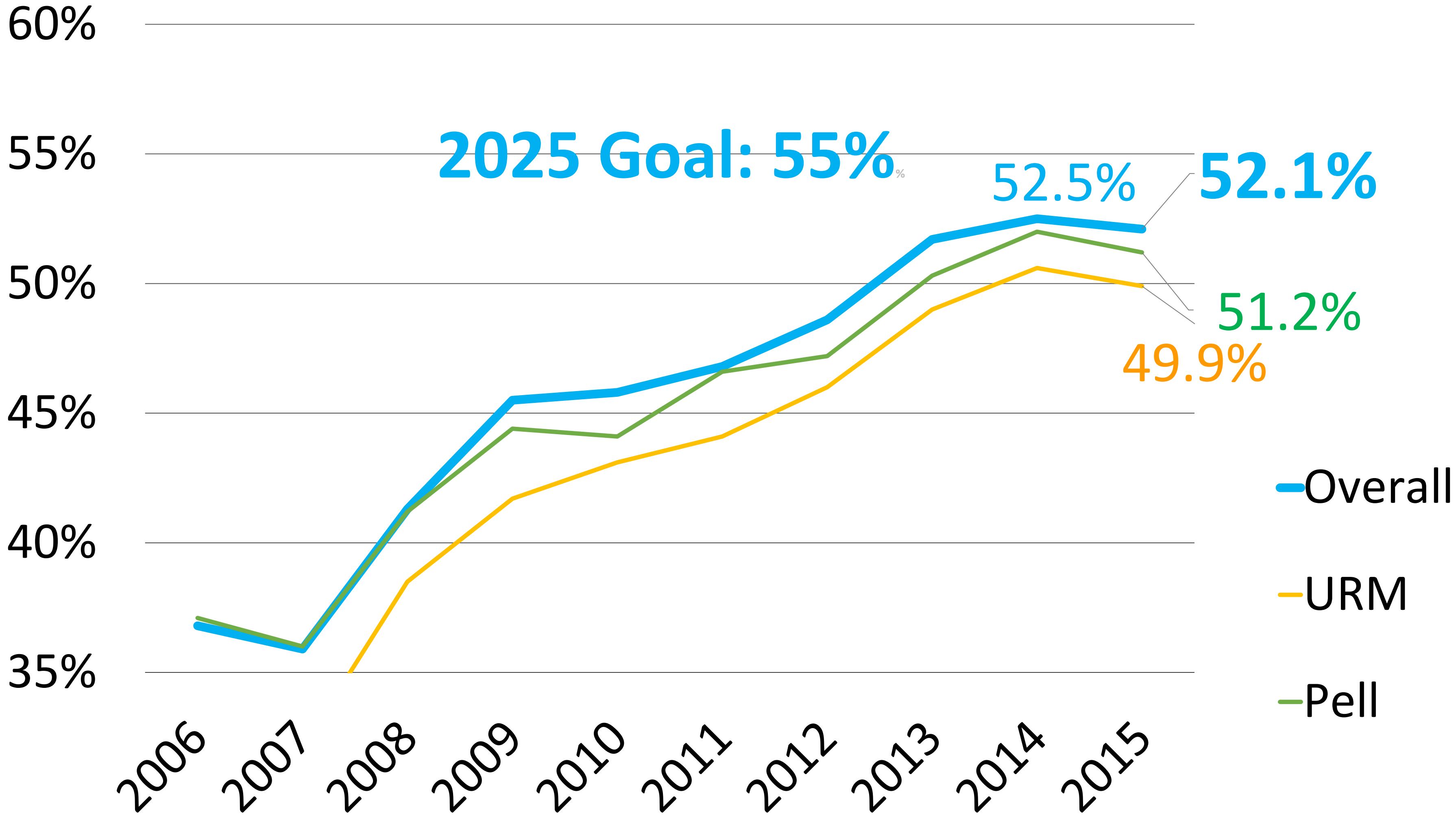
Freshmen **4 Year** Graduation Rate by Incoming Cohort Year



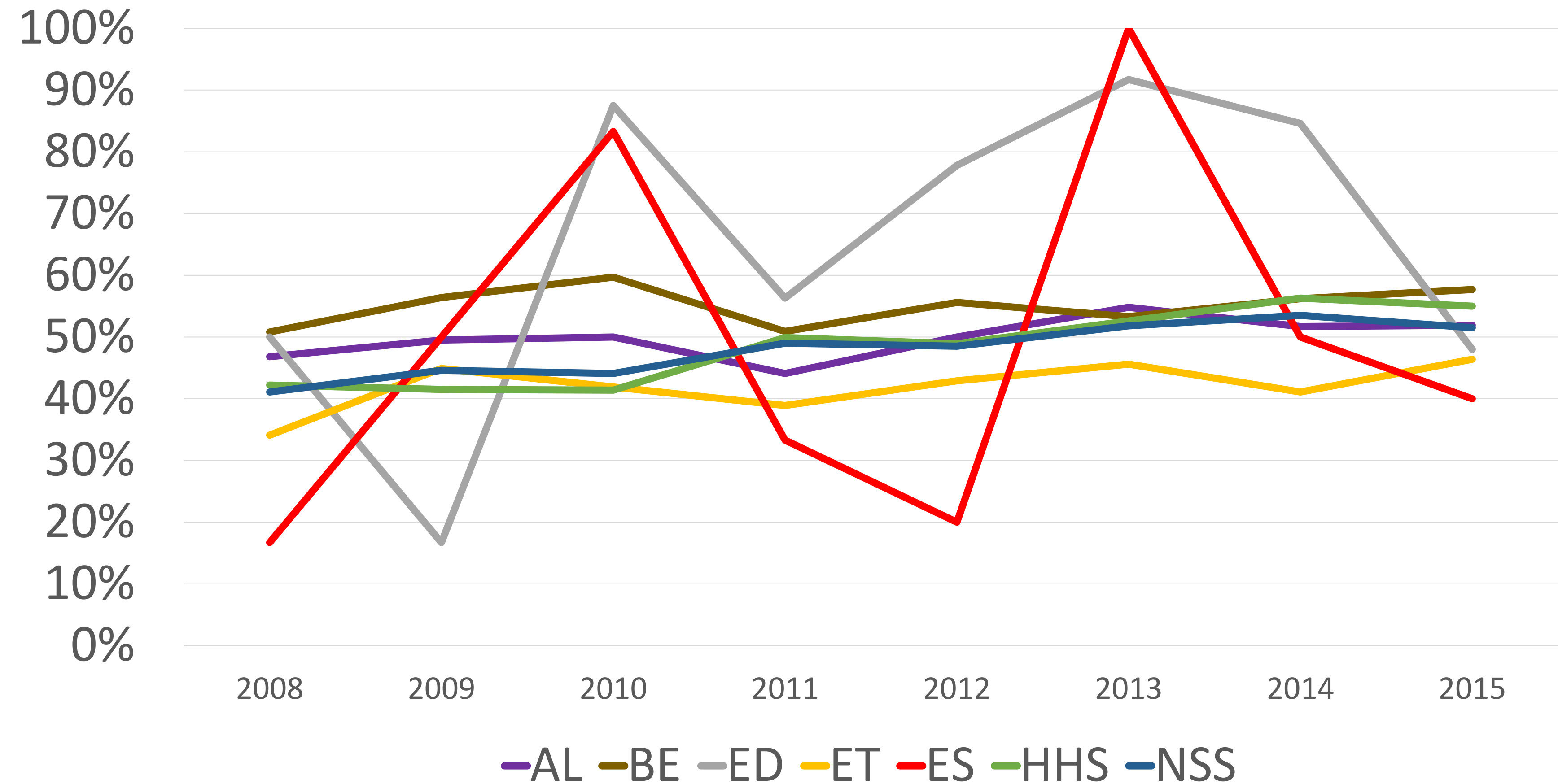
Freshmen 4 Year Graduation Rate by Incoming Cohort Year



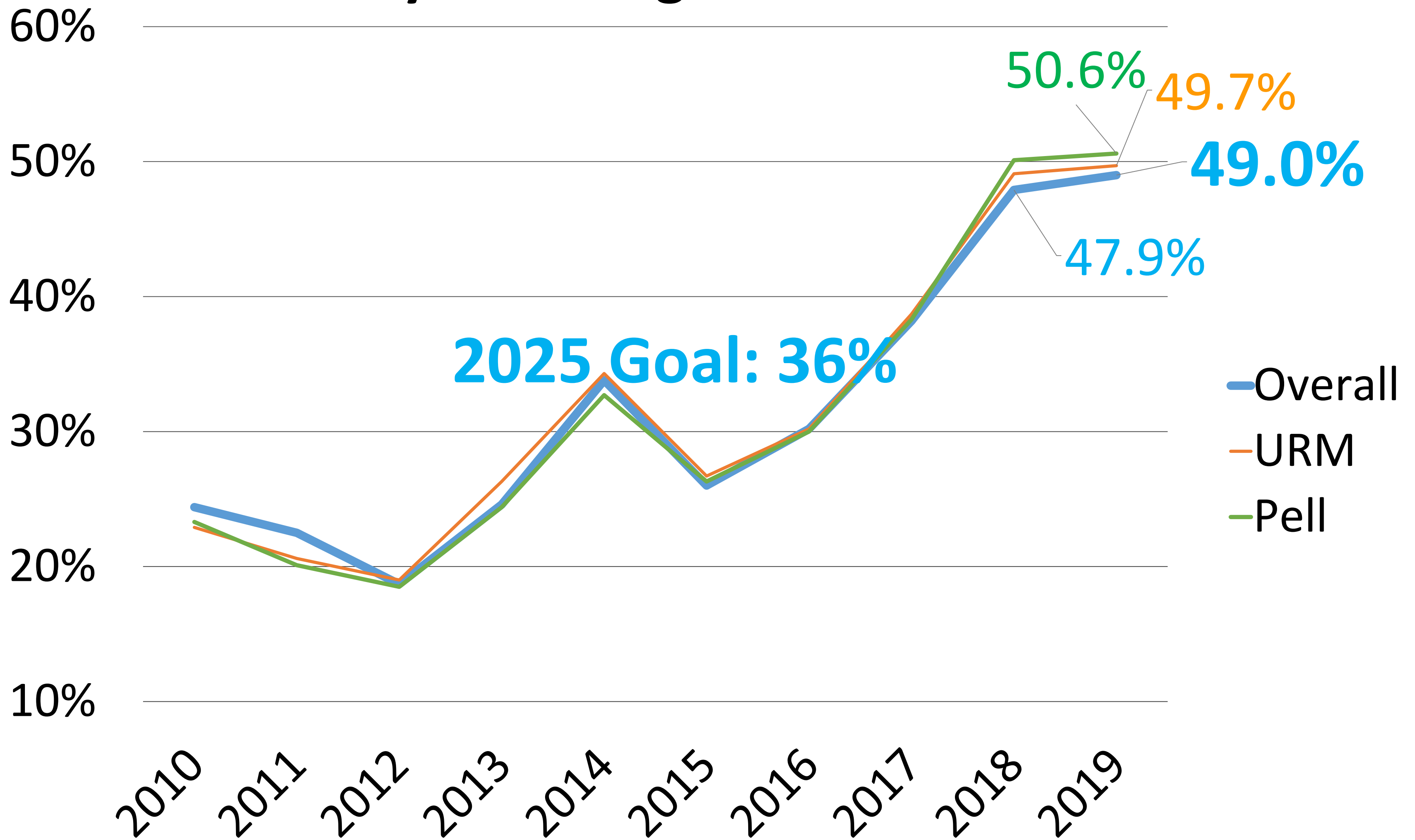
Freshman **6 year** Graduation Rate by Incoming Cohort



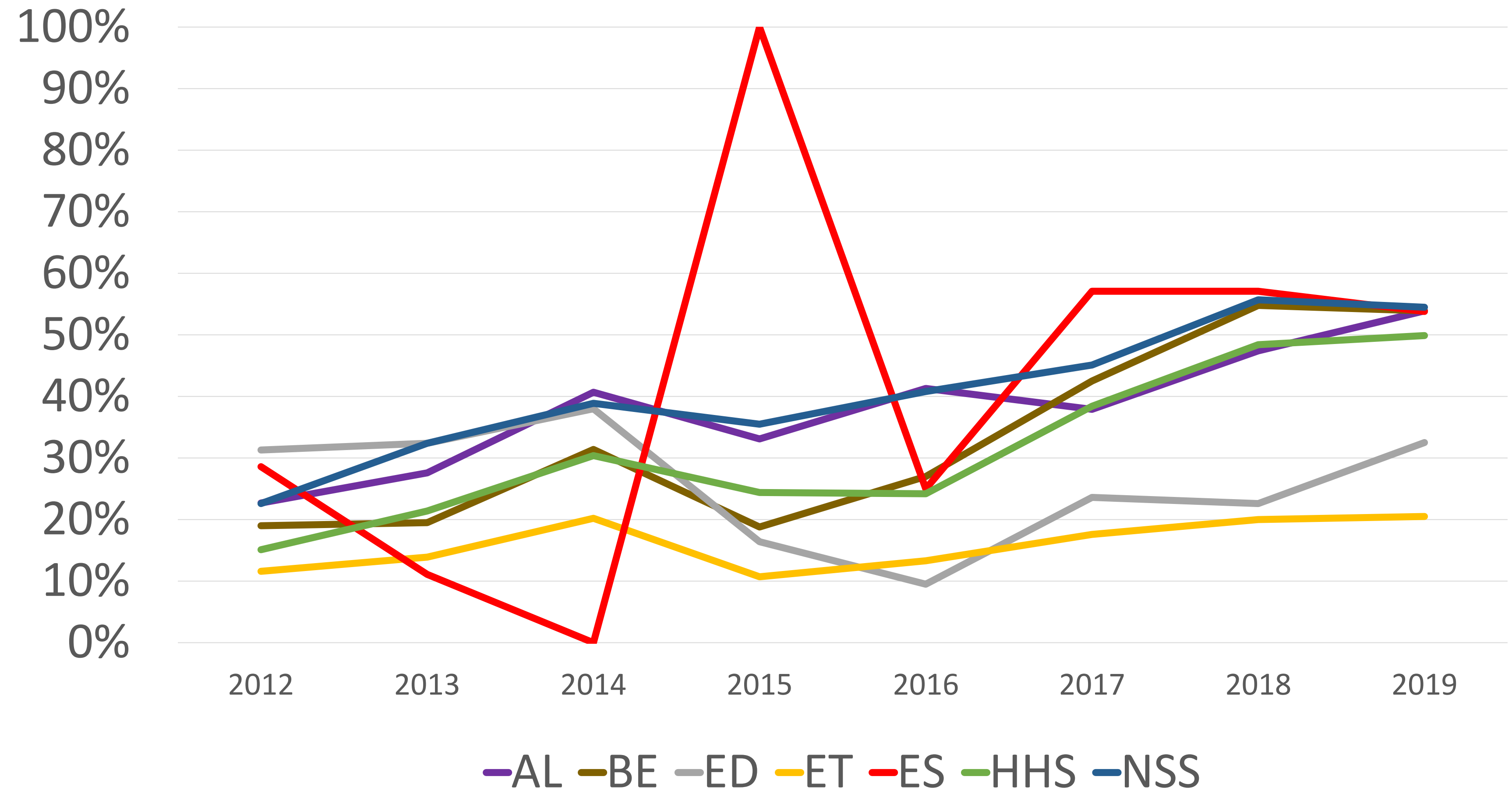
Freshmen 6 Year Graduation Rate by Incoming Cohort Year



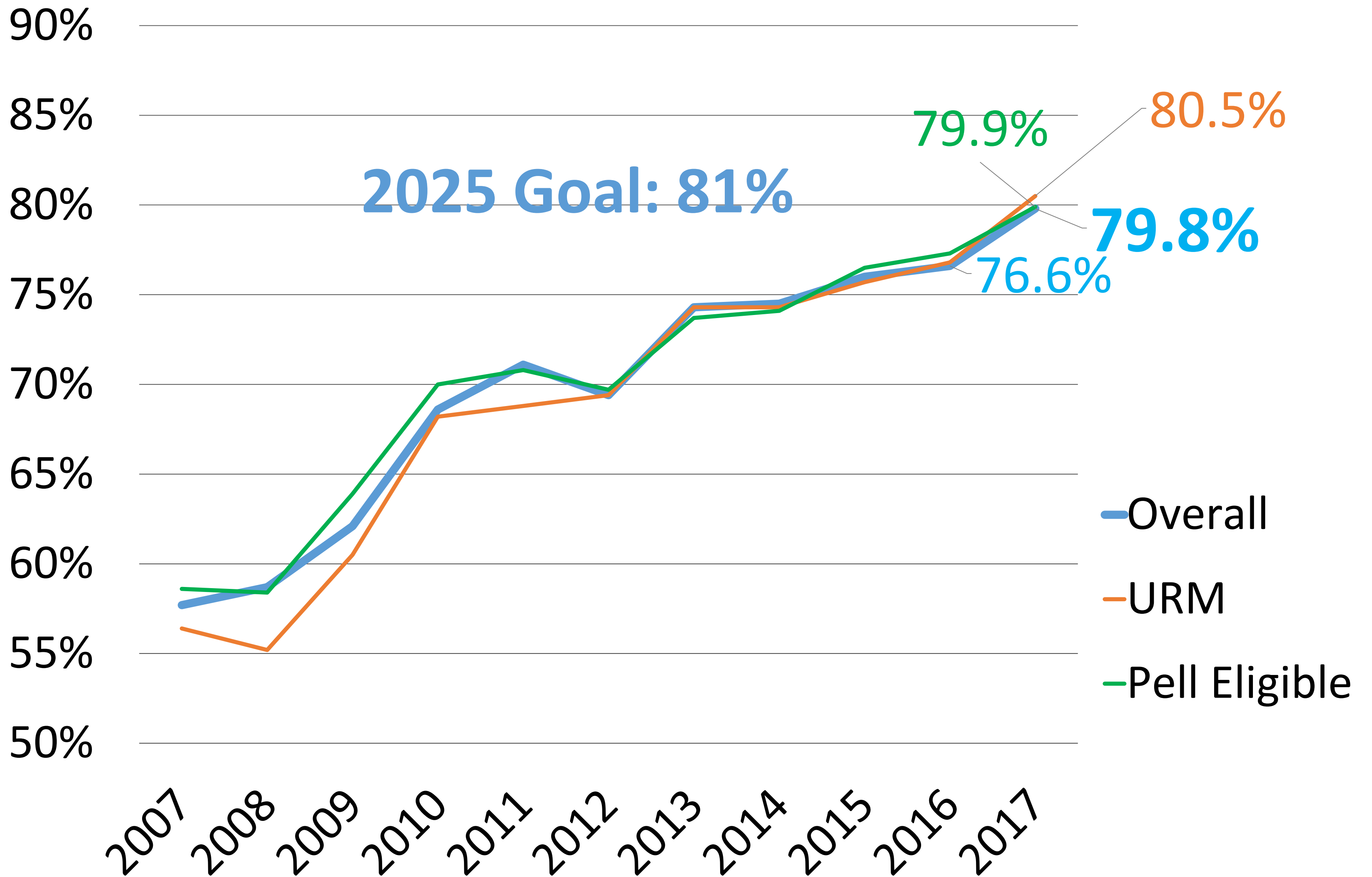
Transfer **2 Year** Graduation Rate by Incoming Cohort Year



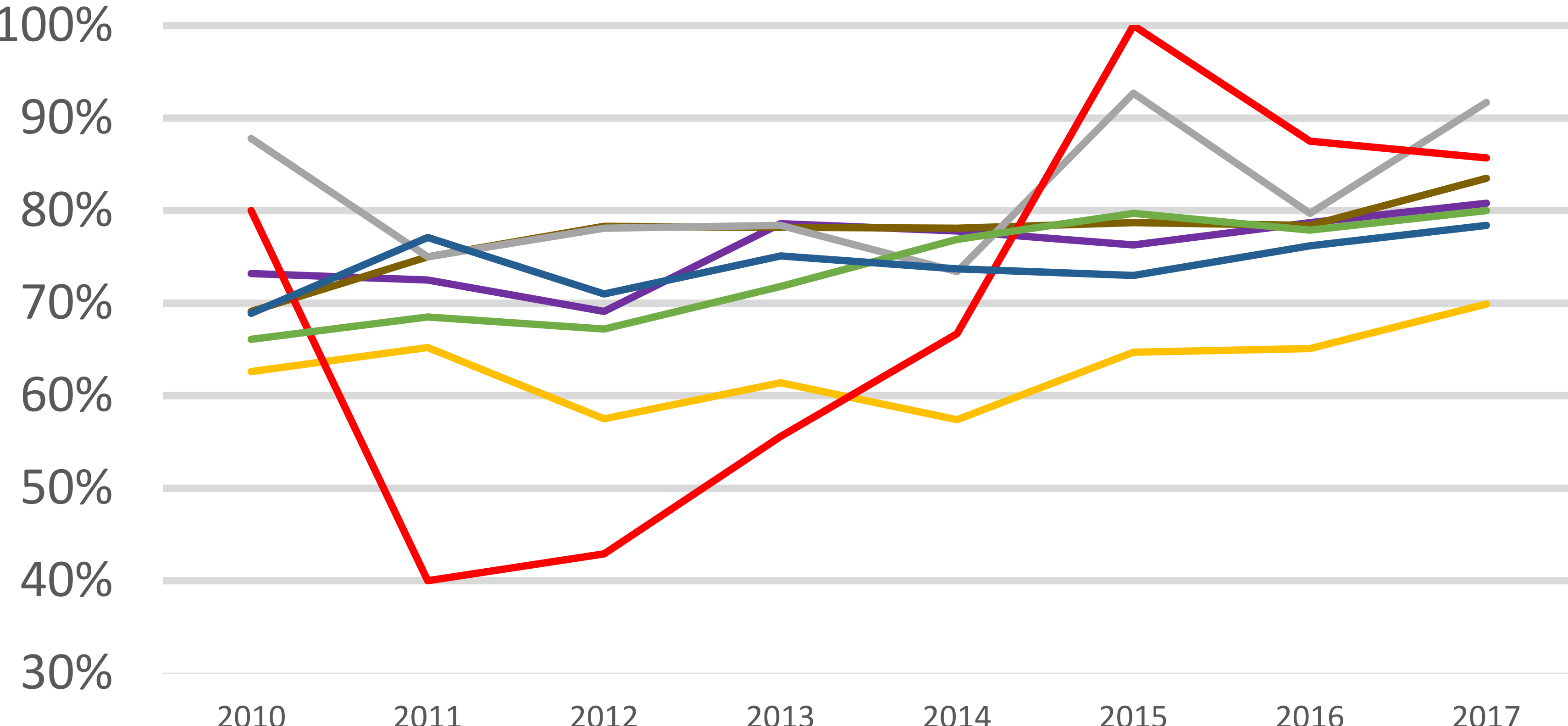
Transfer 2 Year Graduation Rate by Incoming Cohort Year



Transfer **4 Year** Graduation Rate by Incoming Cohort Year



Transfer 4 Year Graduation Rate by Incoming Cohort Year



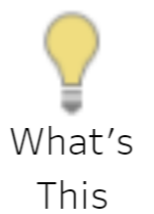
—AL —BE —ED —ET —ES —HHS —NSS

RETENTION

Student Success | Equity Gap Analysis | FTF Outcome | Transfer Outcome | Compare Groups for FTF | Compare Groups for TR | Graduation Stacked Bar

Retention and Graduation

Important: CSU Office of the Chancellor evaluates student success using the first-time, full-time freshmen and CA Community College (CCC) transfers Fall cohorts. Please be mindful of the cohorts you choose when using the **Student Level** filter.



Student Level:
College:
Department:
Plan:
Outcome:
Within:
SAT scale:

How are plans defined?

What're these rates?

What does "Within" mean?

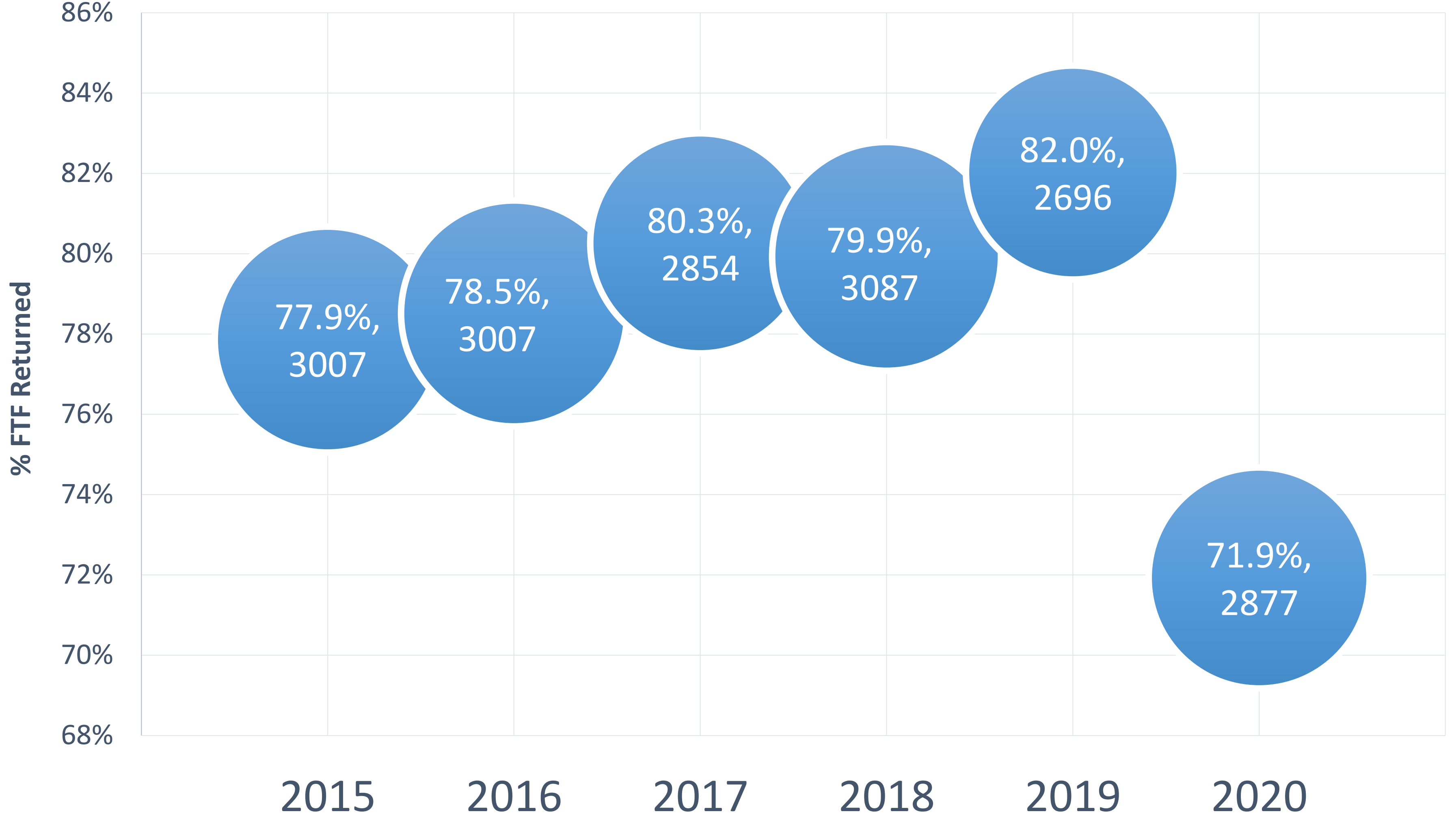
Note on SAT scale

Retention rate

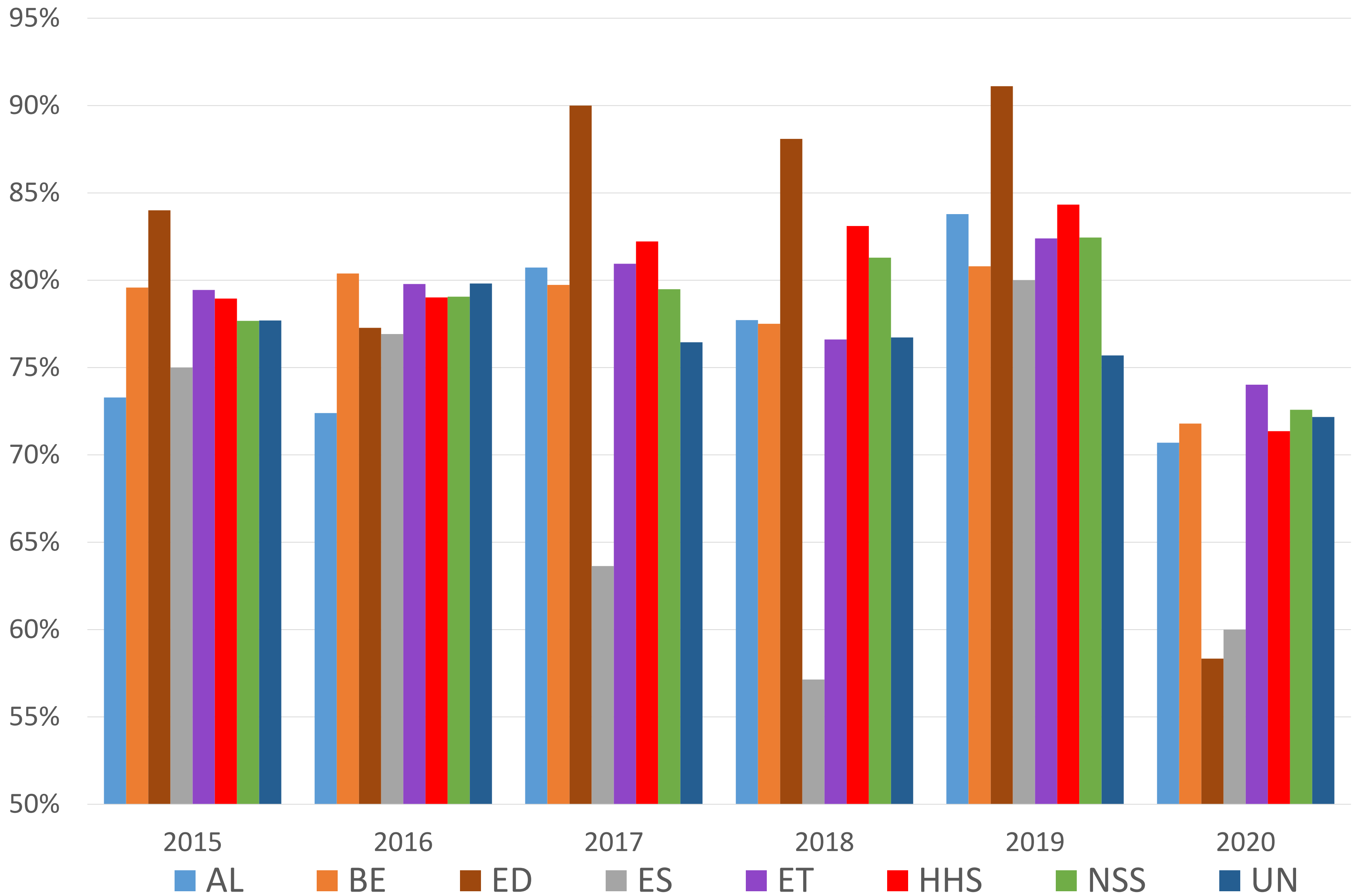
Last Updated: 10/20/2021 11:27:04 AM

Year	Number of Students	Avg. Entry GPA	Avg. SAT	Avg. EI	1 Year	2 Year	3 Year	4 Year	5 Year	6 Year
2007	1,766	3.08	955	3,398	74.5%	63.6%	57.3%	46.9%	29.0%	13.0%

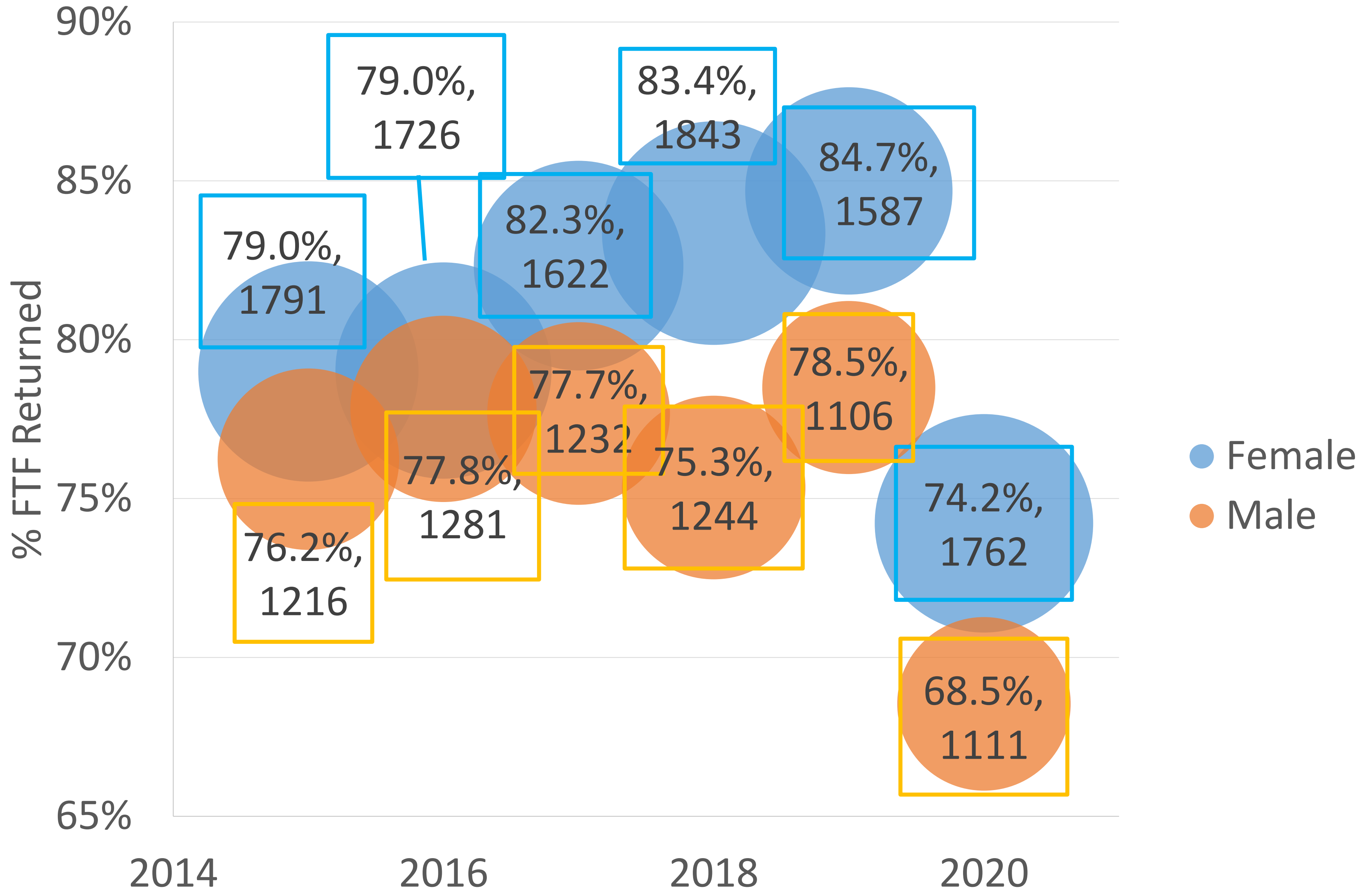
Percent and N of FTF Cohort Returning after 1 Year



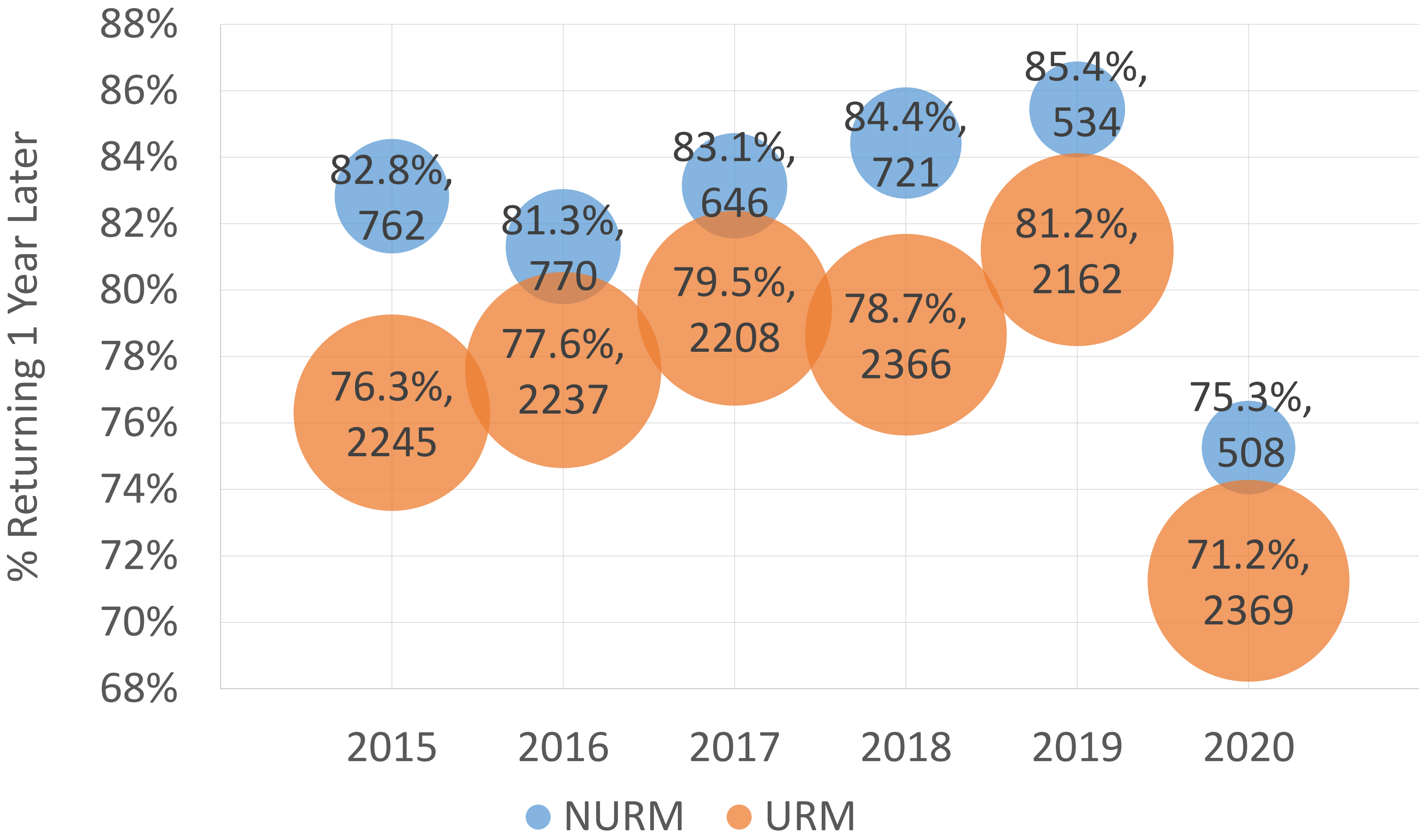
% of FTF Cohort Returning after 1st Year by College



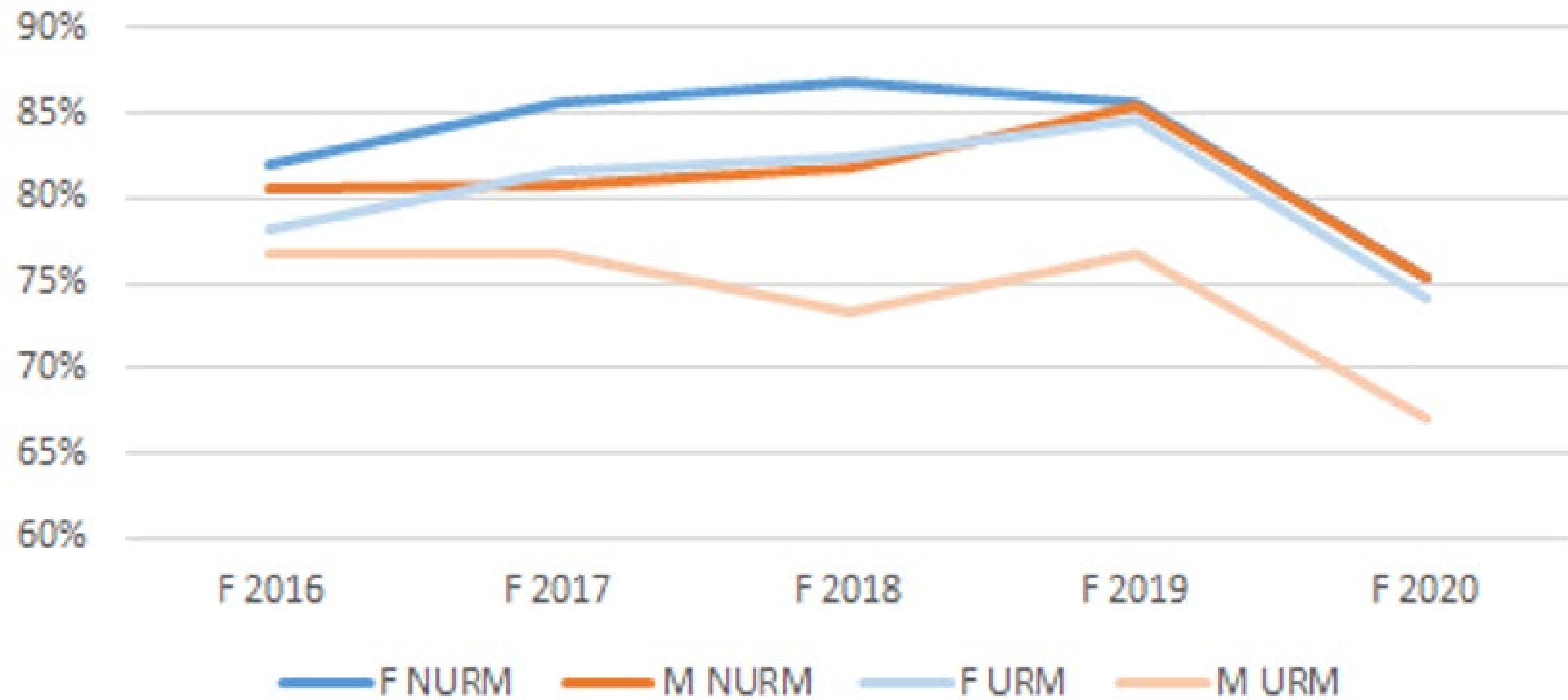
% of FTF Returning after 1 Yr by Gender



1 Year FTF Retention % and # by Cohort Year and URM/NURM

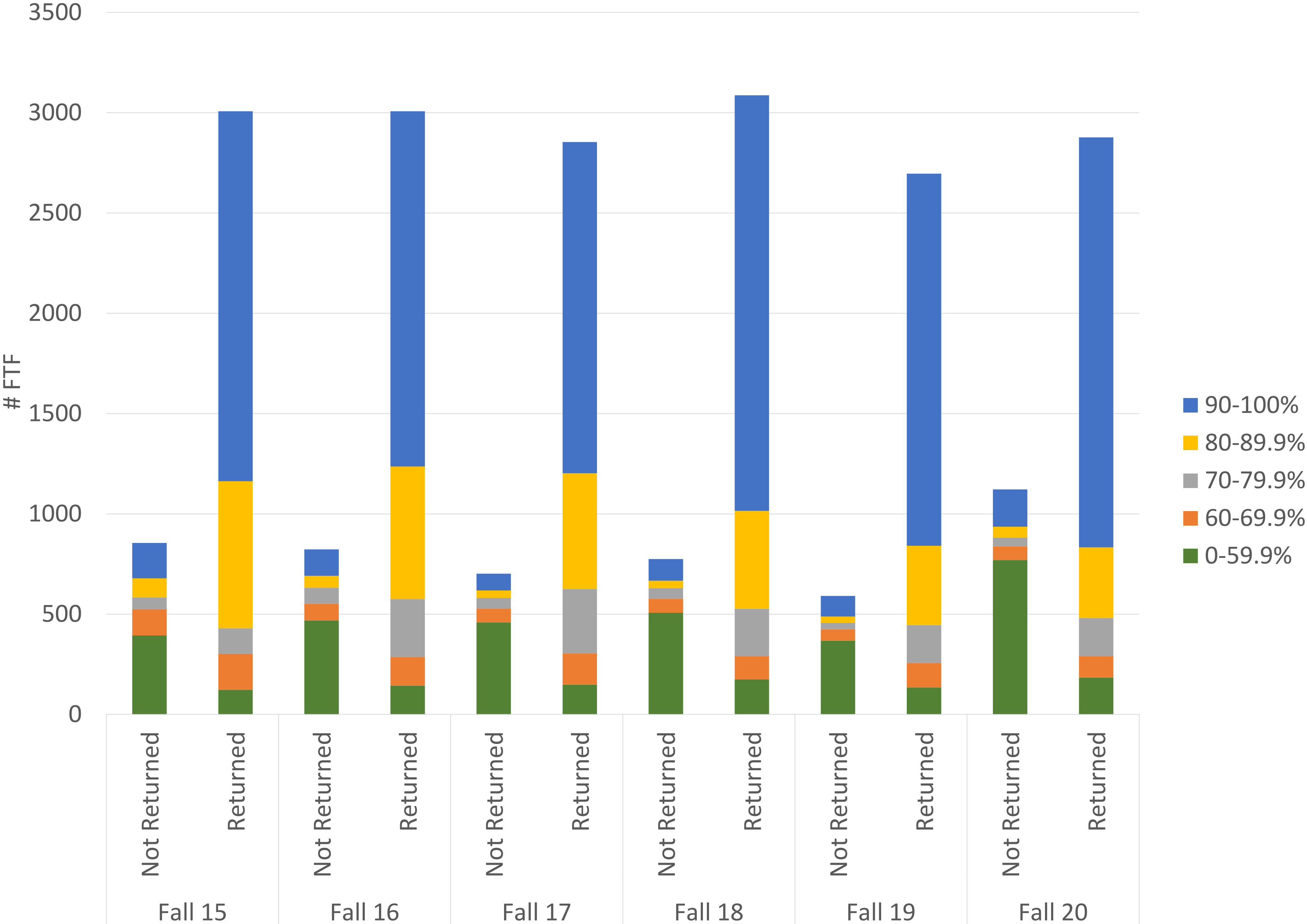


% of FTF returning after 1 year by Sex and URM/NURM



Fall 2020 Cohort	AL	BE	ED	ES	ET	HSS	NSS
F NURM	79%	77%	50%		81%	73%	76%
M NURM	68%	78%			80%	78%	74%
F URM	75%	74%	70%	50%	78%	72%	75%
M URM	65%	67%	33%	1%	71%	64%	64%

FTF Retention After 1 Year by Units Completed



DFW Rates Dashboard - DEMO

The Office of Institutional Effectiveness (IE) provides high-quality data, analytical tools, strategic analysis, and partnership-based education and collaboration to foster a University culture of data-informed decision making.

IE Strategic Plan

DATA DASHBOARDS



Admissions



Retention and Graduation Rates



Year to Year Course Comparison



Enrollment



Degrees Awarded



Daily Enrollment



Average Unit Load



FTES History



Alumni Outcome



Dashboards with ID Login

