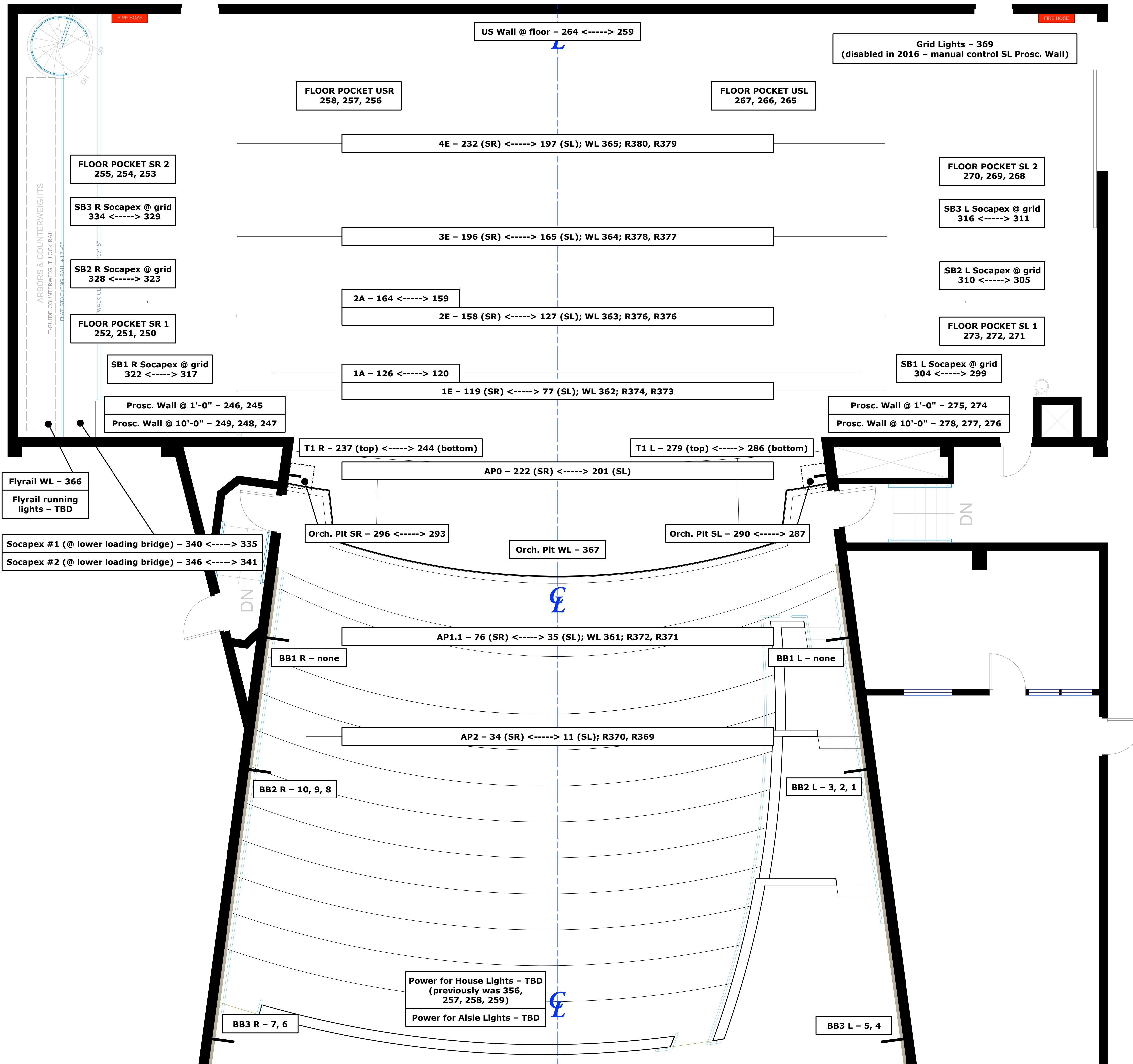
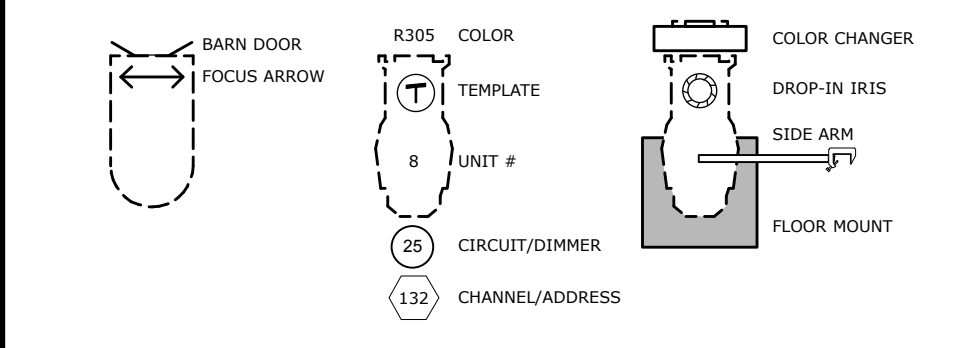


34'-3"	Full Back or Star Drop	41
37'-0"		42
29'-6"	Cybernema - White Line-fitted Screen	37
29'-3"		43
27'-6"	Box of Sockets	44
27'-6"		40
26'-6"	Upstage Traveler	39
26'-3"		38
24'-6"	23'-5" #4 Electric	36
22'-11"		35
22'-11"	Box of Sockets	34
22'-6"		33
21'-3"	#3 Legs	32
20'-6"	#3 Border	31
20'-3"		30
19'-6"		29
18'-6"		28
18'-3"		27
17'-6"		26
17'-3"		25
16'-9"	25'-1" #3 Electric	24
16'-6"		23
15'-3"		22
14'-6"	FF Screen with hard border	21
14'-3"	#4 Legs on masking for FF Screen	20
13'-10"		19
13'-3"	#2 Legs	18
12'-10"	#2 Border	17
12'-3"		16
11'-6"		15
11'-3"	24'-9" #3A Electric - Striplights	14
10'-11"		13
10'-11"	23'-6" #2 Electric	13
9'-6"		12
8'-6"		11
7'-10"	Mid-stage Traveler (width 7'-10" to 7'-7")	10
7'-6"	#1 Legs (R/L)	9
7'-0"	#1 Border (R/L)	8
6'-4"		7
5'-4"	23'-9" #1A Electric - Striplights	6
3'-10"	22'-0" #1 Electric	5
3'-11"		4
2'-7"		3
U-11-122	Main Curtain/Traveler (width 11'-4" to 12'-4")	2
1'-0"	Front Legs (width 0'-0" to 1'-4")	1.1
1'-0"	Grand Trolley (width 0'-0" to 1'-4")	1
0'-3"	Fire Curtain (width 0'-0" to 0'-6")	FC
0'-0"	Proscenium/Plaster Line	
2'-10"	#0 Ante-Procenium Electric/Procenium Pipe	AP0
3'-2"	#1 Tower (Left and Right)	T1
5'-0"	OLD #0 Ante-Procenium Electric (to be removed)	AP0.1
11'-2"	27'-3-1/2" #1 Ante-Procenium Electric (US pipe offstage point)	AP1.1
12'-8"	27'-3-1/2" #1 Ante-Procenium Electric (DS pipe offstage point)	AP1.2
16'-8"	27'-3-1/2" #1 Ante-Procenium Electric (US pipe center point)	AP1.1
16'-9"	#1 Box Boom (Left and Right)	BB1
18'-4"	27'-3-1/2" #1 Ante-Procenium Electric (DS pipe center point)	AP1.2
25'-0"	15'-6-1/4" #2 Ante-Procenium Electric (mounted)	AP2
27'-9"	#2 Box Boom (Left and Right)	BB2
30'-3"	#3 Box Boom (Left and Right)	BB3



KEY

	ETC Source4 19deg @ 750w	6
	ETC Source4 26deg @ 750w	41
	ETC Source4 36deg @ 750w	33
	Altman SS-Cyc 100 @ 100w	15
	Strand 8\" Fresnelite @ 1kw	40
	Century R40 3 Circ 6ft @ 12x120	10
	Altman 6in Fres @ 750w	9
	Altman 14in Scoop @ 500w	12
	Altman 18in Scoop @ 1kw	2
	Aquirii Axceleron	12



Concert House Plot



State Playhouse
Cal State LA
5151 State University Drive
Los Angeles, CA 90032

Circuit Distribution

Scale: 1/4" = 1'-0"	Sheet
Date: 27 May 2020	6
Drawn by: Elizabeth Pietrzak	of 6