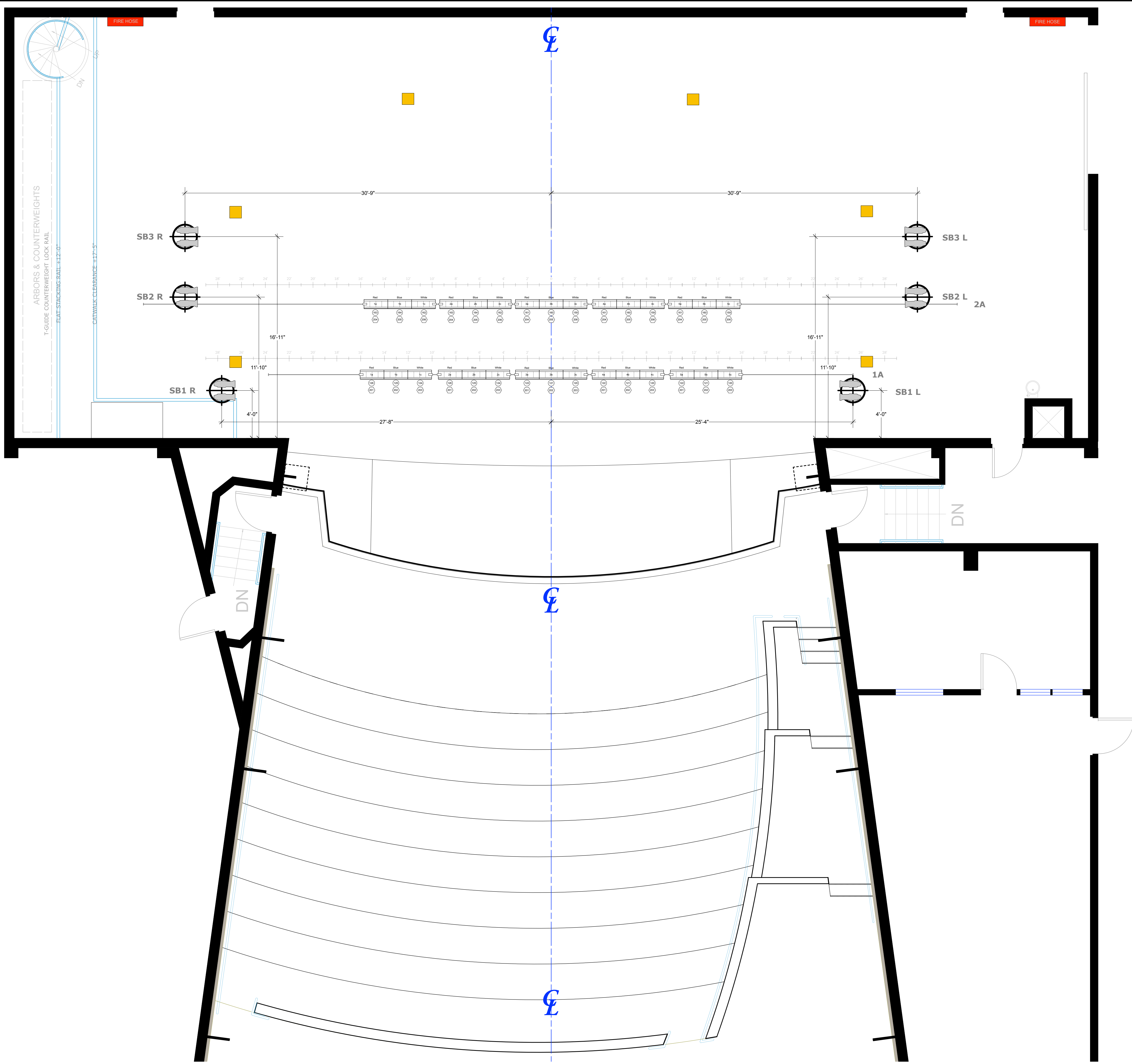
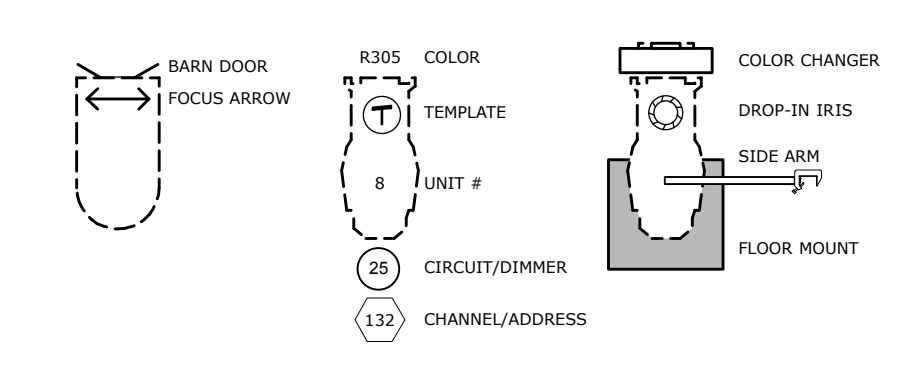


34'-3"	Full Back or Star Drop	41	
37'-0"		42	
29'-6"	Cyberma - White Linx-film Screen	37	
29'-3"		43	
27'-6"	Box Boom	44	
27'-6"		40	
26'-6"	Upright Traveler	39	
26'-3"		38	
24'-6"	23'-5"	A4 Electric	36
22'-11"		35	
22'-11"		34	
22'-11"	Box Boom	33	
21'-3"	#3 Legs	32	
20'-6"	#3 Border	31	
20'-3"	19'-7"	#3 Border	30
19'-6"		29	
18'-3"		28	
18'-0"		27	
18'-3"		26	
17'-6"		25	
16'-9"	25'-1"	#3 Electric	24
16'-0"		23	
15'-3"		22	
14'-6"	FP Screen with hard border	21	
14'-4"	#4 Legs on masking for FP Screen	20	
13'-10"		19	
13'-3"	#2 Legs	18	
12'-10"	20'-6"	#2 Border	17
12'-3"		16	
11'-6"	24'-9"	#2A Electric - Striplights	15
11'-3"		14	
10'-11"	23'-0"	#2 Electric	13
9'-0"		12	
8'-6"		11	
7'-10"	Mid-stage Traveler (width 7'-0" to 7'-7")	10	
7'-6"	#1 Legs (flat)	9	
7'-0"	20'-0"	#1 Border (flat)	8
6'-4"		7	
5'-4"	23'-9"	#1A Electric - Striplights	6
3'-10"	22'-0"	#1 Electric	5
3'-1"		4	
2'-7"		3	
1'-11 1/2"	Min Curtain/Traveler (width 1'-0" to 2'-6")	2	
1'-6"	Panel Legs (width 0'-0" to 3'-0")	1.1	
1'-0"	18'-11"	Grand Trolley (width 0'-0" to 1'-0")	1
0'-3"	Fire Curtain (width 0'-0" to 0'-6")	FC	
0'-0"	Proscenium/Flester Line		
2'-10"	#0 Ante-Proscenium Electric/Proscenium Pipe	AP0	
3'-2"	#1 Tower (Left and Right)	T1	
5'-0"	OLD #0 Ante-Proscenium Electric (to be removed)	AP0.1	
11'-2"	27'-3-1/4"	#1 Ante-Proscenium Electric (DS pipe offstage point)	AP1.1
12'-8"	27'-3-1/2"	#1 Ante-Proscenium Electric (DS pipe offstage point)	AP1.2
16'-8"	27'-3-1/4"	#1 Ante-Proscenium Electric (DS pipe center point)	AP1.1
16'-9"		#1 Box Boom (Left and Right)	BB1
18'-4"	27'-3-1/2"	#1 Ante-Proscenium Electric (DS pipe center point)	AP1.2
25'-0"	15'-8-1/4"	#2 Ante-Proscenium Electric (motorized)	AP2
27'-9"		#2 Box Boom (Left and Right)	BB2
30'-3"		#3 Box Boom (Left and Right)	BB3



### KEY

- ETC Source4 19deg @ 750w 6
- ETC Source4 26deg @ 750w 41
- ETC Source4 36deg @ 750w 33
- Altman SS-Cyc 100 @ 100w 15
- Strand 8" Fresnelite @ 1kw 40
- Century R40 3 Circ 6ft @ 12x120 10
- Altman 6in Fres @ 750w 9
- Altman 14in Scoop @ 500w 12
- Altman 18in Scoop @ 1kw 2
- Aquirii Axceleron 12



### Concert House Plot



State Playhouse  
 Cal State LA  
 5151 State University Drive  
 Los Angeles, CA 90032

### Lightplot - Plan View

Scale: 1/4" = 1'-0"	Sheet
Date: 19 May 2020	<b>2</b>
Drawn by: Elizabeth Pietrzak	of <b>6</b>

State Playhouse drafted by Elizabeth Pietrzak 27 May 2020