

WSCUC Reaffirmation of Accreditation:

Sharing Our Story



CAL STATE LA

CALIFORNIA STATE UNIVERSITY, LOS ANGELES

What Is WSCUC Accreditation?

- Accreditation is a process of external quality review which serves to assure students, parents, policymakers, the broader educational community, and the general public that an institution has met high standards of effectiveness.
- The WASC Senior College and University Commission (WSCUC) is one of seven regional accrediting agencies in the U.S. and is the accrediting body for Cal State LA.
- Every six, eight, or ten years, institutions accredited by WSCUC are reviewed to reaffirm their accreditation status.
- Cal State LA received its last reaffirmation of accreditation in March of 2011. Cal State LA is currently preparing for the next reaffirmation of accreditation review scheduled for 2019.



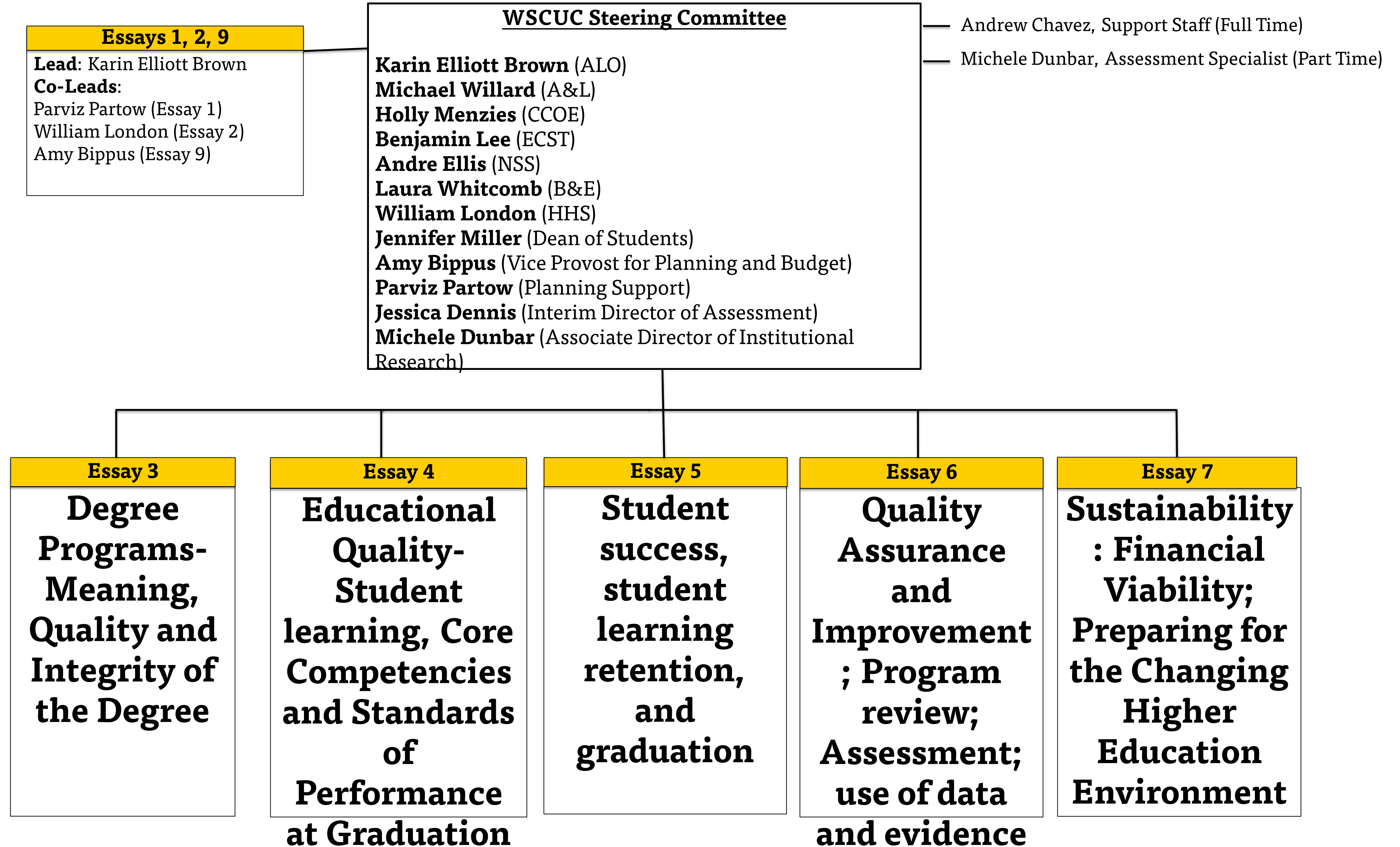
Why Is WSCUC Accreditation Important?

Accreditation is often sought by institutions for several reasons.

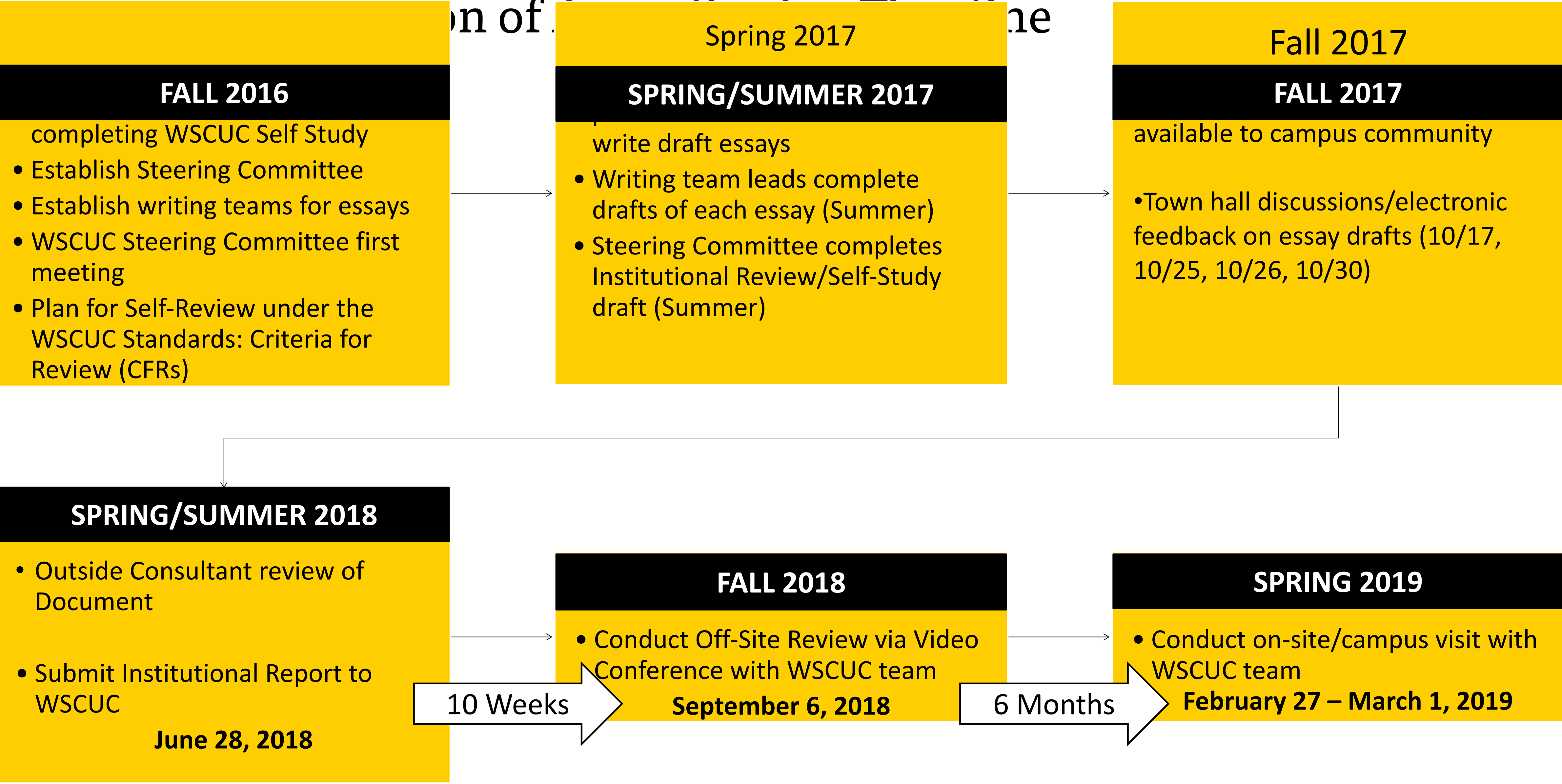
- Accreditation promotes a culture of **continuous improvement** at institutions and serves as a guide for meaningful changes to occur across policies, institutional procedures, curricula, and institutional resources.
- For institutions to **receive federal funding**, including funding that is dispersed to students through financial aid programs, they must be accredited by a nationally-recognized accrediting body.
- Accreditation also helps to ensure that credits and degrees are **recognized for purposes of employment and transfer or admission** to other institutions.

CAL STATE LA

WSCUC Organizational Chart



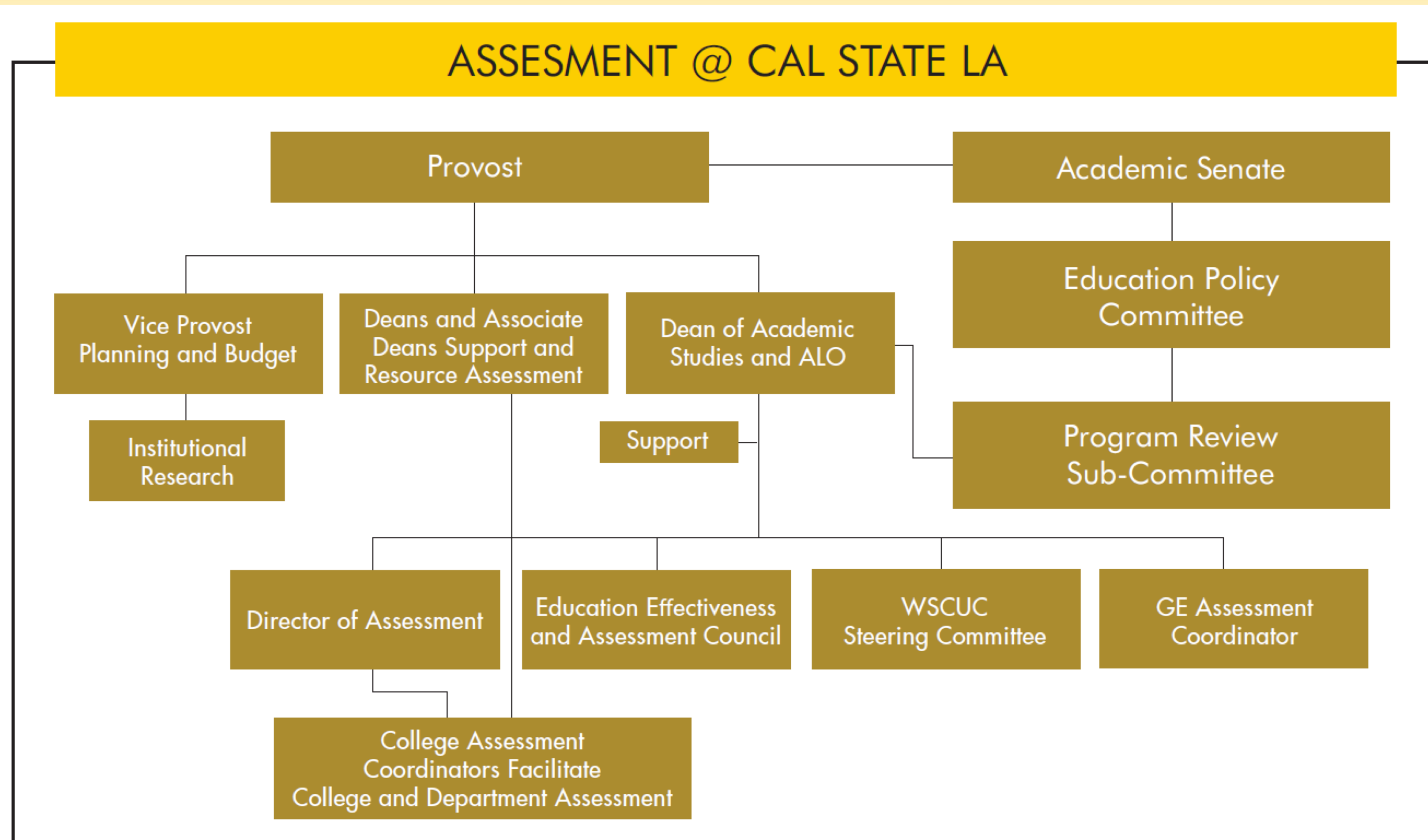
Cal State LA





CHAPTER 6: Quality Assurance and Improvement: Program Review; Assessment; Use of Data and Evidence

Assessment at Cal State L.A.



- Outcomes (ILO's, PLO's, SLO's)
- Resources for Instruction-related Faculty Development and Assessment
- Annual Assessment and Quarter to Semester Conversion
 - Annual Assessment Report
- Current State and Future Directions of Annual Assessment
- Assessment Activities
 - GE Assessment, Core Competencies, Student Life (Career Development, Orientation etc.)
- Growth in Assessment Resources – College Assessment Coordinators, Director of Assessment
- Educational Effectiveness and Assessment Council (EEAC)

Questions about the Institutional Report ?

Goal: 10 years !